

WIRELESS SOLUTIONS FOR ANYONE, ANYWHERE.



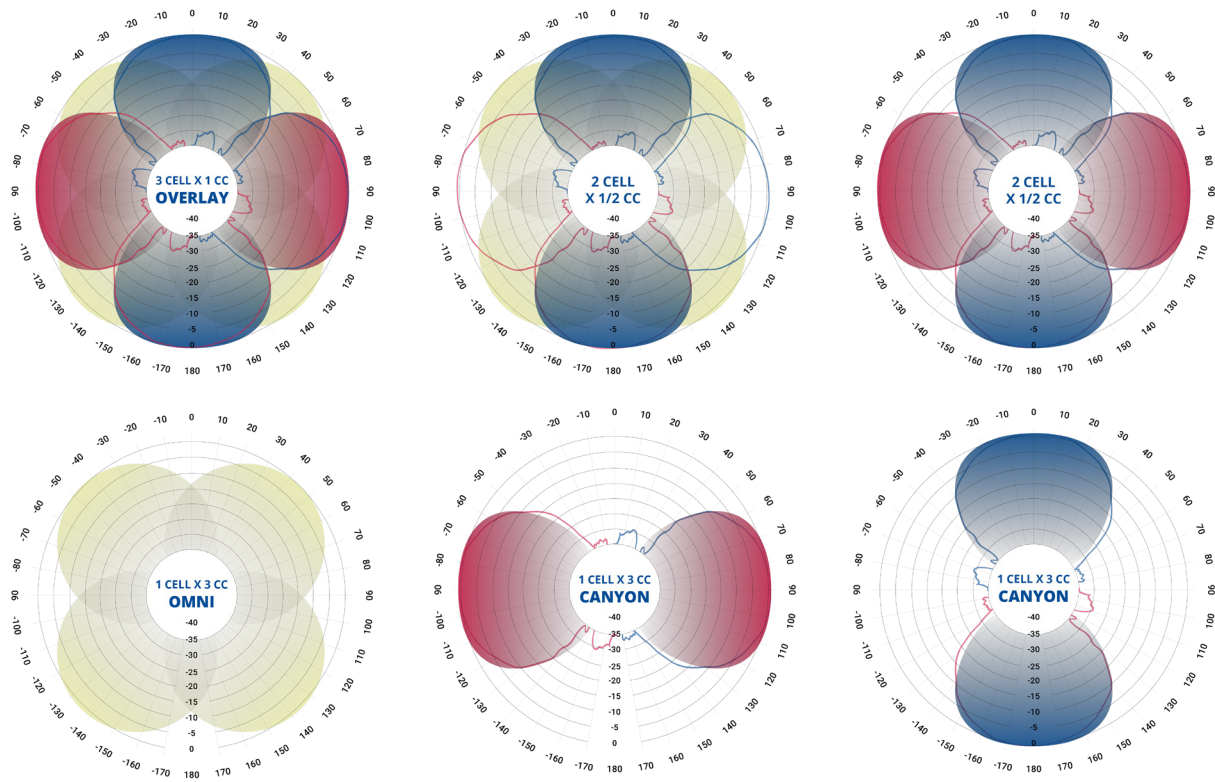
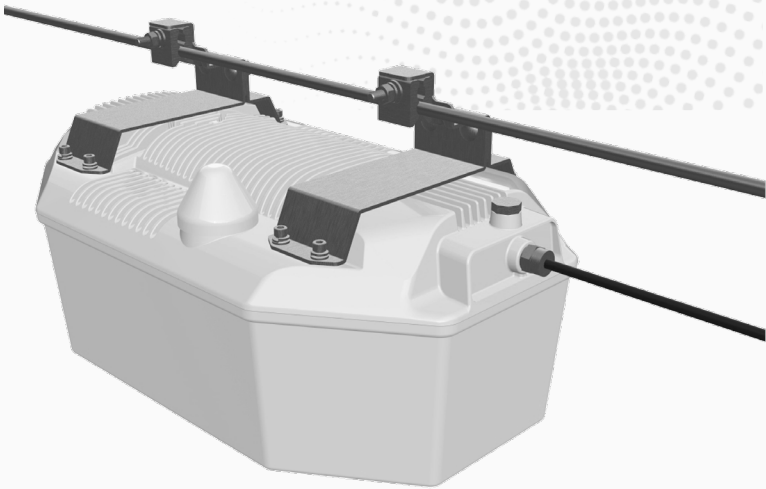
COMMUNICATION COMPONENTS INC.
BLiNQ NETWORKS

SC-300s

■ SC-300s

**500 MBPS.
ADAPTIVE COVERAGE
DYNAMIC CAPACITY
POWERED BY DOCSIS 3.1**

The SC-300s is the strand-mounted solution built for cable providers, that connects directly on top of your existing wires for easy assembly. The software can be programmed to target specific areas to ensure efficient network coverage. Target straight down a street during rush hour, and switch to a widespread area for the evenings. The SC300-S is driven by software to provide the perfect level of control and connectivity.



SC-300s
SPECIFICATIONS

MODEL SERIES		
	BASE MODULE	SC-300s, 3 Sectors/3 CC
Radio specification		
	Frequency Band	TDD LTE Bands 42, 43, 48
	HE EIRP Variant	36 dBm (4W)
	HP EIRP Variant	40 dBm (10 Watt)
	Channel Bandwidth	10, 20MHz (15 MHz SW Upgrade)
	LTE Compliance	3GPP Release 10 (SW upgrade up to Release 13)
	Connected/Active UEs	Up to 288 active users per Box
	Carrier Aggregation	Supports contiguous and non-contiguous 1CC, 2CC, 3CC
	Throughput DL/UL TD-LTE	3GPP Release 10 (SW upgrade to Release 13)
	HE Power Consumption (4W)	77 W max 1CC-3CC Single Sector - 100W max. (3 sectors)
	HP Power Consumption (10W)	97W max. 1CC-3CC Single Sector - 160W max (3 sectors)
	Power	40-90 VAC HFC Plant Power
	Connectivity Backhaul	Coax(5/8-24), Pin-to-F
	Synchronization	Integral GPS receiver (GPS GLONASS BeiDou), 1588v2

SC-300s

SPECIFICATIONS



OA&M		
	Configuration	WebUI / CLI, Radio and Ethernet performance monitoring
	EMS Integration	SNMP v2c/ v3
	OAM Protocols	Netconf, HTTP(S), TCP /IP, UDP, (S)FTP, SSH, TR-069/TR-196
Antenna Specifications CBRS Bands 42, 43, 48		
	Antenna System	Multibeam 4 directional beams + quasi-OMNI beam
	Azimuth coverage	360°
	Gain Directional Beams	Tx : 7 dBi , Rx : 9 dBi
	Gain OMNI	Tx : 0 dBi , Rx : 7 dBi
	Azimuth Beamwidth (-3dB)	45° Directional, 360° OMNI
	Elevation Beamwidth (-3dB)	45°
	Azimuth Sidelobe	< -25 dB (Typ.)
	Front-to-Back Ratio @180°	> 30 dB (Typ.)
	Co-Polar Port-to-Port Isolation	15 dB (Typ.)
	Cross-Pol Port-to-Port Isolation	> 20dB (Typ.)
	Polarization	Dual Pol 45°
	Lightning Protection	DC Ground
Mechanical		
	Dimensions (LxWxD)	517X310x200 mm (20"x12"x8")
	Survival Wind Speed	> 200 km/hr
	Weight	10.0 Kg
	Operational Temperature	-40 to 60 °C

CONTACT US

Tel: +1 416.214.4204
 info@blinqnetworks.com
 www.blinqnetworks.com

140 Renfrew Drive, Markham
 ON, L3R 6B3, Canada

© 2013-2018 BLiNQ Networks a CCI company