

WIRELESS SOLUTIONS FOR
ANYONE, ANYWHERE.

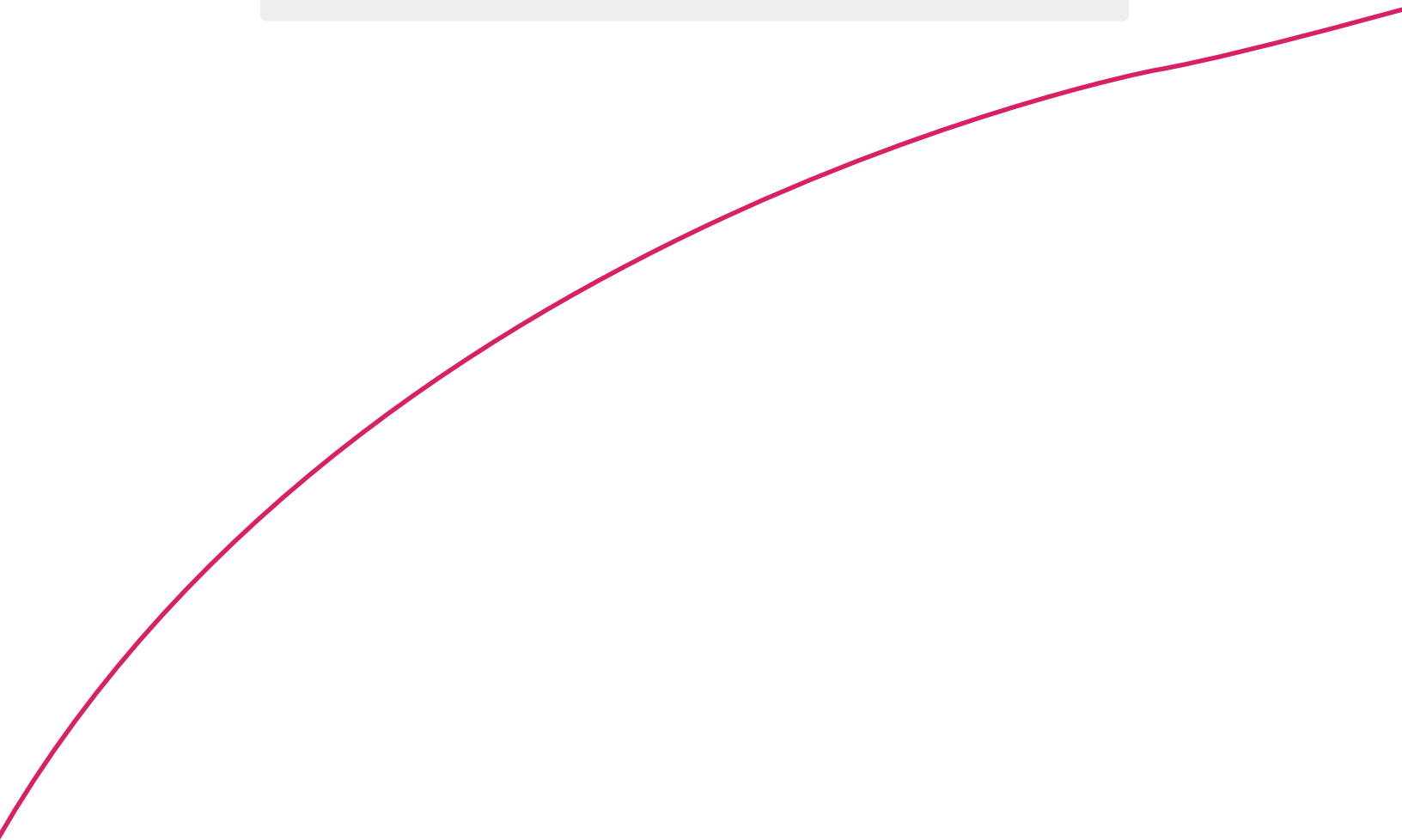


X-300i

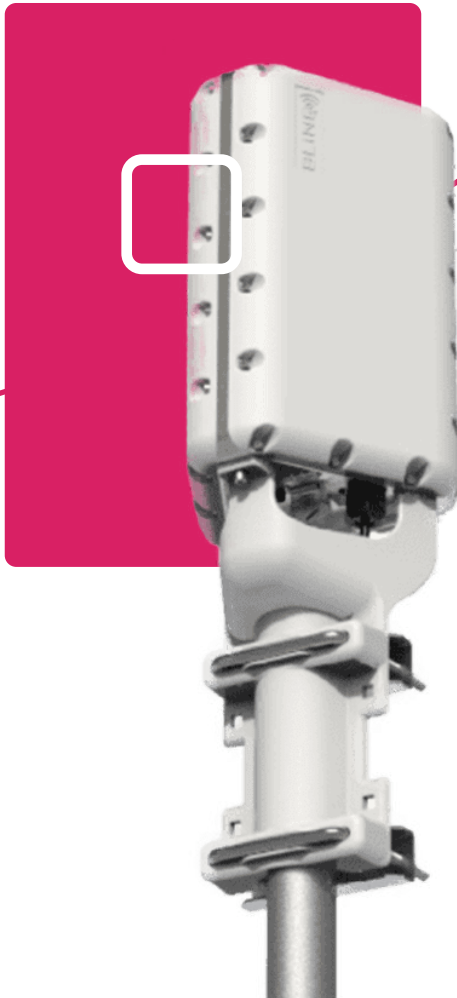
YOUR NETWORK. OUR SOLUTIONS.

About BLiNQ Networks

BLiNQ Networks is a pioneer manufacturer of CBRS-certified fixed access and mobile broadband wireless equipment, providing industry-leading price & performance in LTE and 5G-ready solutions.



X-300i



THE MOST COST EFFICIENT LTE COVERAGE

The X-300i Small Cell provides the most cost-efficient LTE Coverage in response to today's broadband connectivity needs. Following BLiNQ's unique technology approach, the X-300i combines high baseband capability with Active Antenna System Concepts to provide a true software defined radio solution.

The X-300i can be mounted outdoors – on a pedestal, pole or street furniture. It covers 270° of azimuth, powered by an integrated adaptive antenna system of 3 x 90° sectors.

With the X-300i, operators will be able to route capacity as per time of day usage to a more focused coverage, using carrier aggregation.



Cost-efficient



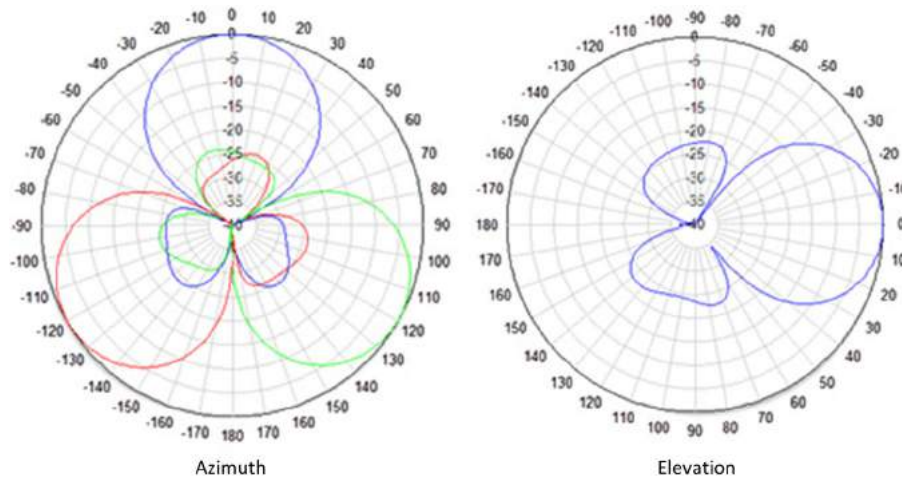
**Ease of
Deployment**



**Dynamic Capacity
Switching**

X-300i

SPECIFICATIONS



MODEL SERIES	
BASE STATION	X-300i
RADIO SPECIFICATION	
Frequency Band	TDD LTE Band 42/43, 48
EIRP Per Sector (Bands 42, 43, 48)	33 dBm
Channel Bandwidth	10, 20 MHz
MIMO	3 Cells with 2x2 MIMO each
LTE Compliance	3GPP Release 10 (SW upgrade to Release 13)
MECHANICAL	
Dimensions (L x W x D)	13" x 9.05" x 8.1" (330 x 230 x 206 mm)
Weight	14.3 lbs (6.5kg)
Survival Wind Speed	>124 mph (>200 km/hr)
Operational Temperature	-40 °F to 140 ° F (-40 °C to 60 °C)
Enclosure	IP67
PERFORMANCE & ATTRIBUTES	
Connected/Active UEs	Up to 96 active users per sector; 288 active users per box
Carrier Aggregation	Supports contiguous and non-contiguous 2CC configuration
Throughput	L2 aggregate uplink and downlink: 115 Mbps per eNB Supports up to 480 Mbps per eNB*

X-300i

SPECIFICATIONS



	Operating Mode	TDD-LTE
	Power Consumption	70 W
	Power	48V DC
	Connectivity	1 x Copper 1000BaseT 1 x SFP (Optional)
	Synchronization	Integral GPS receiver (GPS GLONASS BeiDou)
	CBRS	CBSD Category B – with 2 W aggregate EIRP certified
	Embedded EPC	Software Option
OA&M		
	Configuration	WebUI, CLI and EMS
	EMS Integration	SNMP v2c/v3, RestConf
	OAM Protocols	Netconf, HTTP(S), TCP/IP, UDP, (S)FTP, SSH
ANTENNA SPECIFICATIONS		
	Gain	12 dBi
	Azimuth Coverage	270° coverage (90° per sector)
	Azimuth Beamwidth (-3 dB)	45°
	Azimuth Beamwidth (-15 dB)	90°
	Elevation Beamwidth (-3 dB)	40°
	Elevation Beamwidth (-15 dB)	80°
	Electrical Downtilt	0°
	Azimuth Sidelobe	< -25 dB (Typ.)
	Front-to-Back Ratio @180°	> 30 dB (Typ.)
	Co-Polar Port-to-Port Isolation	15 dB (Typ.)
	Cross-Polarization Port-to-Port Isolation	> 20dB (Typ.)
	Max. Voltage Standing Wave Ratio (VSWR)	1.5:1
	Polarization	Dual Pol 45°
	Lightning Protection	DC Ground



CONTACT US

Tel: +1 416.214.4204
info@blinqnetworks.com
www.blinqnetworks.com

140 Renfrew Drive, Markham
ON, L3R 6B3, Canada
© 2018-2020 BLiNQ Networks a CCI company