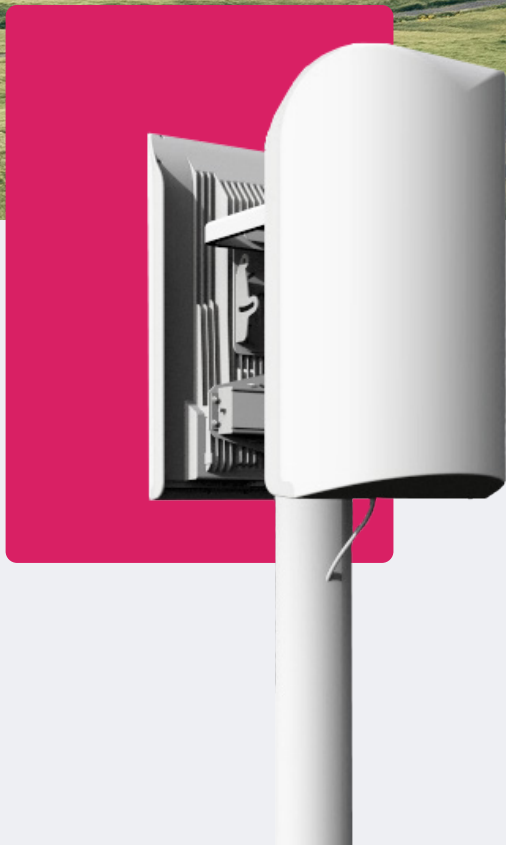


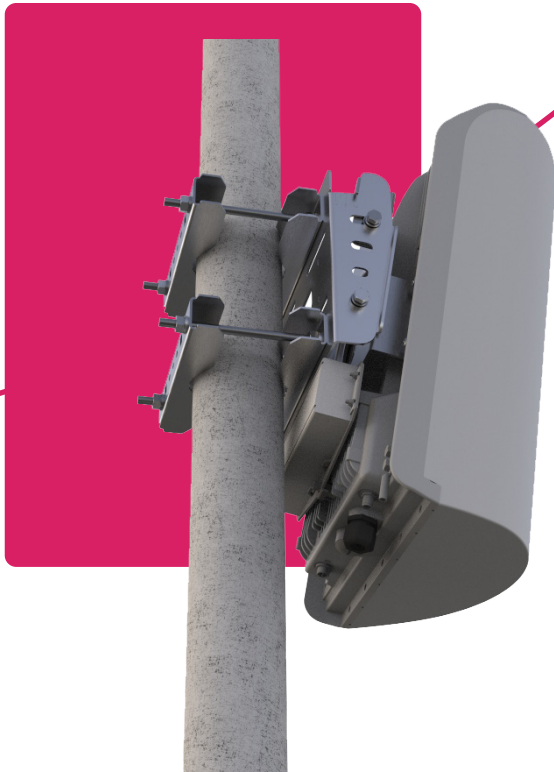


CONNECTING COMMUNITIES THROUGH
WIRELESS SOLUTIONS



FW-300i

FW-300i



3X COVERAGE & CAPACITY AT $\frac{1}{3}$ THE COST

The FW-300i is an integrated wireless solution that is easy to set up, fits anywhere, and provides incredible network capacity. It is a tri-sector and tri-carrier Long-Term Evolution (LTE) Evolved Node B (eNB) with the capability to operate in the following bands: 42, 43 and 48 (Citizens Broadband Radio Service or CBRS).

From the side of a building or water tower, the FW-300i is ready to go immediately, giving you 3x the capacity at $\frac{1}{3}$ the price.

Whether you want to expand your network to remote communities or to busy urban intersections, this OnGo Certified product helps you bring LTE connectivity to anyone, anywhere.

HERE ARE SOME KEY FEATURES:

- 'All-In-One' Fully Integrated Solution
- CBRS Category B Certified
- Supports all LTE TDD Configurations
- Supports 10 MHz and 20 MHz
- Supports Uplink* and Downlink Carrier Aggregation (up to 3CC*)
- 180° Azimuth Coverage
- Features Standard 2x2 MIMO Configurations
- Supports 256 QAM* Downlink and 64 QAM Uplink
- Supports IPv6
- Supports Mobility*



All-In-One Solution



Ease of Deployment



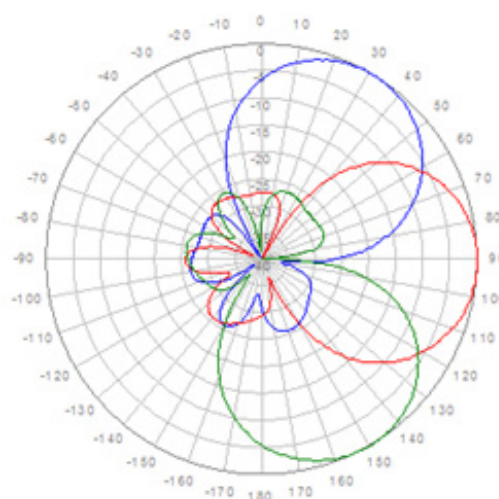
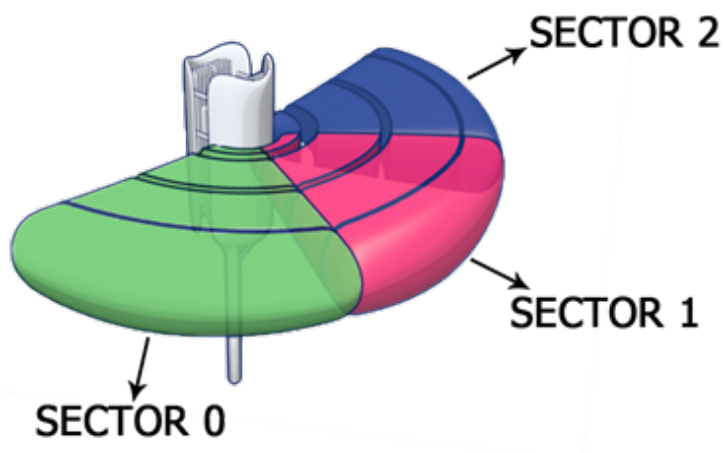
CBRS Category B Certified



Supports Carrier Aggregation

FW-300i

SPECIFICATIONS



MODELS

FW3-B48-00-HP-NA / FW3-B42-43-HP-EU

	FW3-B48-00-HP-NA	FW3-B42-43-HP-EU
RADIO SPECIFICATION		
Frequency Band	3.55-3.70 GHz (LTE Band 48 - CBRS)	3.40-3.80 GHz (LTE Band 42/43)
Transmit Power	-10 dBm up to + 30 dBm per TX Pout (add 3 dBm for aggregate power)	-10 dBm up to + 36 dBm per TX Pout (add 3 dBm for aggregate power)
EIRP	17 dBi Integrated Antenna --> up to 53 dBm EIRP/Sector	
Channel Bandwidth	10, 20 MHz	
MIMO	2TX x 2RX per Sector	
LTE Compliance	3GPP Release 10 (SW upgrade to Release 13)	
PERFORMANCE & ATTRIBUTES		
Number of UEs Supported	Up to 288 UEs per Base Unit	
Carrier Aggregation	Supports contiguous and non-contiguous 2CC, 3CC* Covers full CBRS band (150 MHz)	
Throughput DL TDD Config 2-7	110 Mbps (140 Mbps*) per Carrier 330 Mbps (420 Mbps*) per Base Unit - 3 x Carriers	
Throughput UL TDD Config 2-7	11 Mbps per Carrier 33 Mbps per Base unit - 3 x Carriers	
Operating Mode	TD-LTE	
Power Consumption	180 W maximum	
Power	48 VDC	
Connectivity	Default: 1 x Copper 1000BaseT; Optional: 1 x SFP	
Synchronization	Integral GPS antenna (GPS, GLONASS, BeiDou) Optional: External GPS	
Citizens Broadband Radio Service (CBRS)	CBSD Category B Certified	
Embedded Evolved Packet Core (EPC)	Software Option	

*Roadmap item

FW-300i

SPECIFICATIONS



	FW3-B48-00-HP-NA	FW3-B42-43-HP-EU
OPERATIONS, ADMINISTRATION AND MAINTENANCE (OAM)		
Configuration	WebUI, CLI and EMS	
EMS Integration	RESTCONF	
OAM Protocols	RESTCONF, HTTPS, SSH, SNMPv2c	
ANTENNA SPECIFICATIONS BANDS 42/43, 48		
Gain	17 dBi	
Azimuth Coverage (-5 dB)	180°	
Azimuth Beamwidth (-3 dB)	45°	
Azimuth Beamwidth (-5 dB)	60°	
Elevation Beamwidth (-3 dB)	10°	
Electrical Downtilt	0°	
Azimuth Sidelobe	< -25 dB (Typ.)	
Front-to-Back Ratio @180 Degrees	> 30 dB (Typ.)	
Co-Polar Port-to-Port Isolation	15 dB (Typ.)	
Cross-Polarization Port-to-Port Isolation	> 20 dB (Typ.)	
Max. Voltage Standing Wave Ratio (VSWR)	1.5:1	
Polarization	Dual Pol 45°	
Lightning Protection	DC Ground	
MECHANICAL		
Dimensions (L x W x D)	13.78" x 22.4" x 8.9" (350 mm x 570 mm x 227 mm)	
Survival Wind Speed	Up to 124 mph (200 kph)	
Weight	26.5 lbs. (12.0 Kg)	
Operational Temperature	-40 °F to 140 °F (-40 °C to 60 °C)	
Mechanical Uptilt/Downtilt	0° - 10°	

YOUR NETWORK. OUR SOLUTIONS.



CONTACT US

Tel: +1.800.301.4962
info@blinqnetworks.com
www.blinqnetworks.com

140 Renfrew Drive, Markham
ON, L3R 6B3, Canada
© 2019-2022 BLiNQ Networks