



CONNECTING COMMUNITIES THROUGH
WIRELESS SOLUTIONS



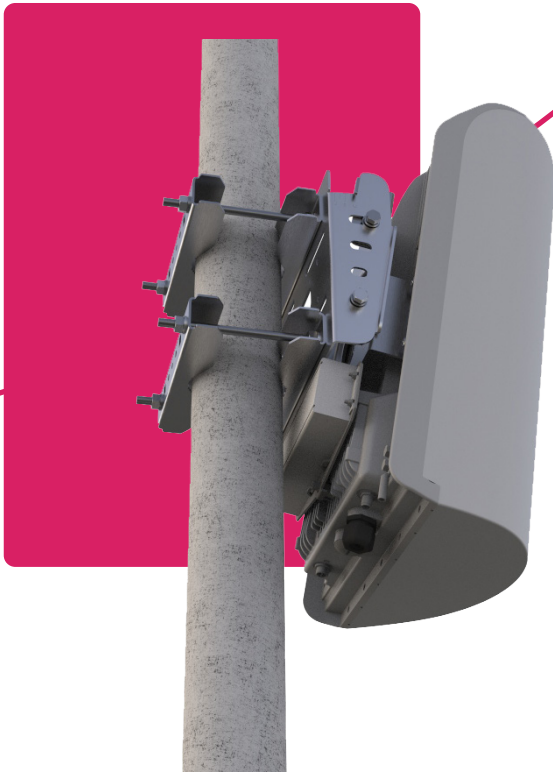
FW-300i

FW-300i LAA



DUAL BAND

FW-300i LAA



Greater Flexibility; Increased Capacity

The BLiNQ Dual Band FW-300i LAA system is a one sector Long-Term Evolution (LTE) Evolved Node B (eNB) with the ability to operate in both Band 46 (UNII-1 and UNII-3) and Band 48 (Citizens Broadband Radio Service or CBRS).

Designed to provide carrier redundancy, this dual band wireless radio system has 3 CC* capabilities when using one or both bands, providing greater flexibility to users looking for more spectrum in order to provide higher capacity.

From the side of a building or water tower, this simple solution fits easily, bringing LTE connectivity to anyone, anywhere.



All-In-One Solution



Ease of Deployment



CBRS Category B Certified



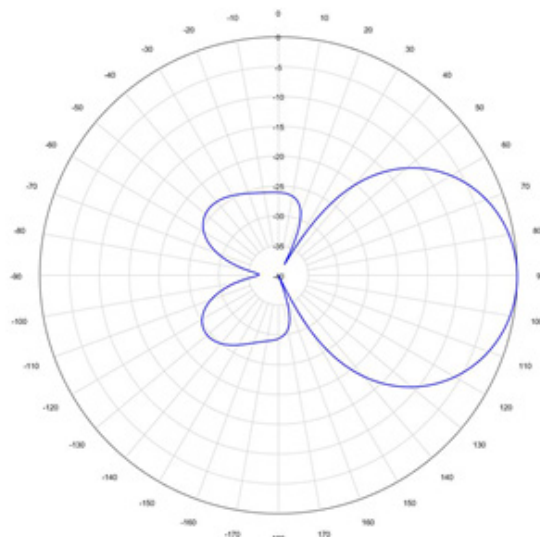
Unique Dual Band Design

HERE ARE SOME KEY FEATURES:

- 'All-In-One' Fully Integrated Solution
- Features Self Channel Assignment
- Supports Uplink* and Downlink Carrier Aggregation (Up to 3CC*)
- CBRS Category B Certified
- Supports all LTE TDD Configurations
- 60° Azimuth Coverage
- Features Standard 2x2 MIMO Configurations
- Supports 256 QAM* downlink and 64 QAM Uplink
- Network Management: WebUI, CLI and EMS
- Supports Mobility*

FW-300i LAA

SPECIFICATIONS



MODEL		
FW3-B48-46-HP-NA		
RADIO SPECIFICATION		
Frequency Band	3.55-3.70 GHz (LTE Band 48 - CBRS) 5.15-5.25 GHz (UNII-1) and 5.725-5.85 GHz (UNII-3)	
Transmit Power	B48:	
	10 MHz • 30 dBm/antenna port (1CC) • 30 dBm/antenna port (2CC)	20 MHz • 33 dBm/antenna port (1CC) • 30 dBm/antenna port (2CC)
	B46 (UNII-1 and UNII-3):	
	10 MHz FCC Compliant: 13 dBm/antenna port Max. Transmit Pout: 23 dBm/antenna port	20 MHz FCC Compliant: 16 dBm/antenna port Max. Transmit Pout: 23 dBm/antenna port
EIRP (per carrier)	B48:	
	10 MHz • 47 dBm EIRP/antenna port (1CC) • 47 dBm EIRP/antenna port (2CC)	20 MHz • 50 dBm EIRP/antenna port (1CC) • 47 dBm EIRP/antenna port (2CC)
	B46 (UNII-1 and UNII-3):	
	10 MHz 33 dBm EIRP/sector (aggregate power per MIMO)	20 MHz 36 dBm EIRP/sector (aggregate power per MIMO)
Channel Bandwidth	10 MHz, 20 MHz	
MIMO	2TX x 2RX (several possible MIMO configurations)	
LTE Compliance	3GPP Release 10 (SW upgrade to Release 13)	
PERFORMANCE AND ATTRIBUTES		
Number of UEs Supported	Up to 96 UEs per Base Unit	
Carrier Aggregation	Supports contiguous and non-contiguous 2CC, 3CC* Covers full CBRS band (150 MHz)	

FW-300i LAA

SPECIFICATIONS



Throughput DL TDD Config 2-7	110 Mbps per Carrier (140 Mbps*) 330 Mbps per Base Unit - 3 x Carriers (420 Mbps*)
Throughput UL TDD Config 2-7	11 Mbps per Carrier 22 Mbps per Base Unit - 2 x Carriers
Operating Mode	TD-LTE
Power Consumption	180 W maximum
Power	48 VDC
Connectivity	Default: 1 x Copper 1000BaseT; Optional: 1 x SFP
Synchronization	Integral GPS antenna (GPS, GLONASS, BeiDou), Optional: External GPS
Citizens Broadband Radio Service (CBRS)	CBSD Category B Certified
Embedded Evolved Packet Core (EPC)	Software Option
OPERATIONS, ADMINISTRATION AND MAINTENANCE (OAM)	
Configuration	WebUI, CLI and EMS
EMS Integration	RESTCONF
OAM Protocols	RESTCONF, HTTPS, SSH, SNMPv2c
ANTENNA SPECIFICATIONS	
Gain	17 dBi
Azimuth Coverage (-5 dB)	180°
Azimuth Beamwidth (-3 dB)	45°
Azimuth Beamwidth (-5 dB)	60°
Elevation Beamwidth (-3 dB)	10°
Electrical Downtilt	0°
Azimuth Sidelobe	< -25 dB (Typ.)
Front-to-Back Ratio @180°	> 30 dB (Typ.)
Co-Polar Port-to-Port Isolation	15 dB (Typ.)
Cross-Polarization Port-to-Port Isolation	> 20 dB (Typ.)
Max. Voltage Standing Wave Ratio (VSWR)	1.5:1
Polarization	Dual Pol 45 degrees
Lightning Protection	DC Ground
MECHANICAL	
Dimensions (L x W x D)	13.78" x 22.4" x 8.9" (350 mm x 570 mm x 227 mm)
Survival Wind Speed	Up to 124 mph (200 kph)
Weight	26.5 lbs. (12.0 Kg)
Operational Temperature	-40 °F to 140 °F (-40 °C to 60 °C)
Mechanical Uptilt/Downtilt	0° - 10°

*Roadmap item

YOUR NETWORK. OUR SOLUTIONS.



CONTACT US

Tel: +1 800.301.4962
info@blinqnetworks.com
www.blinqnetworks.com

140 Renfrew Drive, Markham
ON, L3R 6B3, Canada
© 2022 BLiNQ Networks