



CONNECTING COMMUNITIES THROUGH
WIRELESS SOLUTIONS

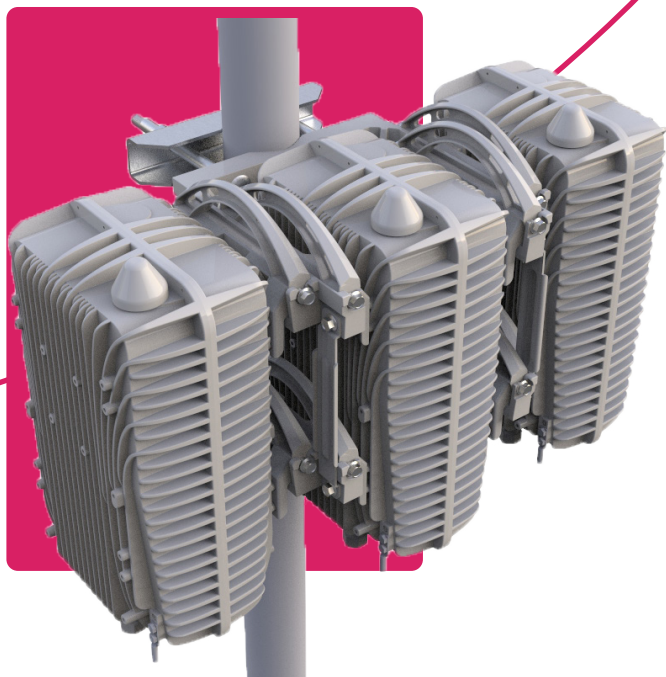


FW-600

B 4 1



FW-600



A POWERFUL NETWORK SOLUTION THAT PUSHES BOUNDARIES

The FW-600 is an ultra-high capacity, all integrated multicarrier LTE base station system. It is designed as a response to today's broadband connectivity needs in rural and dense suburban markets.

This powerful single band base station can easily match or out-perform most MIMO commercial solutions in the Band 41 spectrum. Paired with passive beamforming antenna systems, the FW-600 brings spectral efficiency and capacity to new horizons.

THE FW-600 B41 SINGLE BAND ARCHITECTURE FEATURES:

- 3 Carriers and up to 3 Beams
- Peak Throughput: 370 Mbps per Base Unit
- Over the Air Uplink* and Downlink (Up to 3CC*) Carrier Aggregation
- Mobility Support*
- 10 MHz, 15 MHz and 20 MHz Channel Bandwidths



256 QAM* Downlink & 64 QAM Uplink



Supports Carrier Aggregation



High Capacity

FW-600 B41

SPECIFICATIONS

MODEL	
FW6-B41-00-WW	
RADIO SPECIFICATION	
Frequency Band	TDD LTE Bands 41
Max. Transmit Power	39 dBm/port (+ 3 dBm MIMO)
Channel Bandwidth	10 MHz / 15 MHz / 20 MHz
MIMO	6Tx x 6Rx (several possible MIMO configurations)
LTE Compliance	3GPP Release 10 (SW upgrade to Release 13)
PERFORMANCE & ATTRIBUTES	
Number of UEs Supported	Up to 288 UEs per Base Unit
Carrier Aggregation	Supports contiguous and non-contiguous 2CC, 3CC* configurations
Throughput DL TDD Config 2-7	110 Mbps (140 Mbps*) per Carrier 330 Mbps (420 Mbps*) per base unit - 3 x Carriers
Throughput UL TDD Config 2-7	11 Mbps per Carrier 33 Mbps per base unit - 3 x Carriers
Operating Mode	TD-LTE supports all standard frame configurations
Power Consumption	480 W
Power	48V DC
Connectivity	1 x Copper 1000BaseT 1 x SFP 1 x PPS TNC Connector 6 x 2.2-5 RF Connectors
Synchronization	Integral GPS receiver (GPS, GLONASS, BeiDou)
Embedded EPC	Software Option
OAM	
Configuration	WebUI, CLI and EMS
EMS Integration	RESTCONF
OAM Protocols	RESTCONF, HTTPS, SSH, SNMPv2c
MECHANICAL	
Dimensions (LxWxD) Base Unit	19.4" x 12" x 8.4" (492 mm x 304 mm x 160 mm)
Survival Wind Speed	Up to 125 mph (200 kph)
Weight	25.0 kg
Bracket Weight	33.1 lbs (15 kg) – Supports up to 3 x FW-600 units
Operational Temperature	-40 °F to 140 °F (-40 °C to 60 °C)

FW-600 B41

PROPOSED DEPLOYMENT CONFIGURATIONS



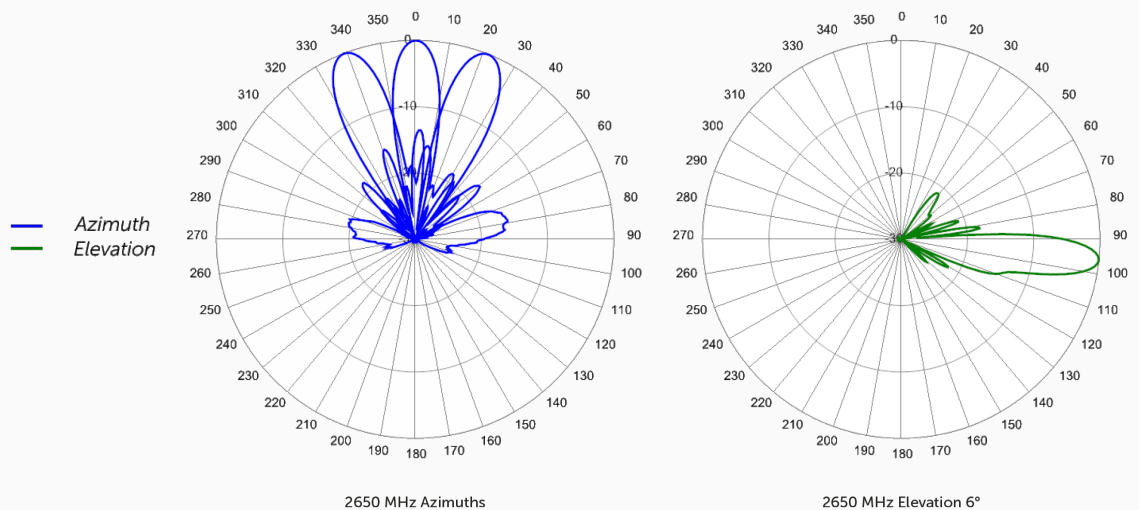
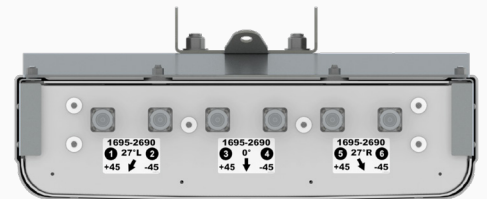
Here is one of the recommended antenna pairings and its deployment configuration.

FW6-MBA3F-E3AB:

THREE-BEAM SPECIAL EVENTS ANTENNA

This three foot (0.8m) tall, single band, six port multibeam array contains three independent LTE Optimized Beams covering 1695-2690 MHz frequencies.

LTE Optimized Beams improve LTE data throughput by minimizing beam crossover, providing an efficient use of valuable radio capacity and frequency spectrum.



FW-600 B41

ANTENNA SPECIFICATIONS

ELECTRICAL		
	Ports	6 x High Band Ports
	Frequency Range	2496-2690 MHz
	Gain	21.5 dBi
	Azimuth Beamwidth (-3dB)	12.8°
	Azimuth Beam Crossover	11.0 dB
	Elevation Beamwidth (-3dB)	9.7°
	Electrical Downtilt	6°
	Elevation Sidelobes (1st Upper)	< -16 dB
	Front-to-Back Ratio @180°	> 35 dB
	Cross-Polar Discrimination (at Peak)	> 19 dB
	Cross-Polar Port-to-Port Isolation	> 24 dB
	Interbeam Co-Pol Isolation (Adjacent Beams)	> 15 dB
	Interbeam Co-Pol Isolation (Non-Adjacent Beams) (Worse Case)	> 12 dB
	Voltage Standing Wave Ratio (VSWR)	< 1.5:1
	Passive Intermodulation (2x20W)	≤ -153 dBc
	Input Power Continuous Wave (CW)	200 watts
	Polarization	Dual Pol 45°
	Input Impedance	50 ohms
	Lightning Protection	DC Ground
MECHANICAL		
	Dimensions (LxWxD)	30.5" x 24.9" x 6.6" (776 mm x 633 mm x 167 mm)
	Survival Wind Speed	Up to 150 mph (240 km/hr)
	Front Wind load	162 lbs (722 N) @ 100 mph (161 kph)
	Side Wind Load	46 lbs (206 N) @ 100 mph (161 kph)
	Equivalent Flat Plate Area	6.3 ft² (0.6 m²)
	Weight*	41.6 lbs (18.9 kg)
	Connector	6 x 7-16 DIN female long neck or 4.3-10 female
	Mounting Pole	2" to 5" (5 cm to 12 cm)
* Weight excludes mounting		



YOUR NETWORK. OUR SOLUTIONS.

CONTACT US

Tel: +1 800.301.4962
info@blinqnetworks.com
www.blinqnetworks.com

140 Renfrew Drive, Markham
ON, L3R 6B3, Canada
© 2018-2022 BLiNQ Networks a CCI company