



CONNECTING COMMUNITIES THROUGH
WIRELESS SOLUTIONS

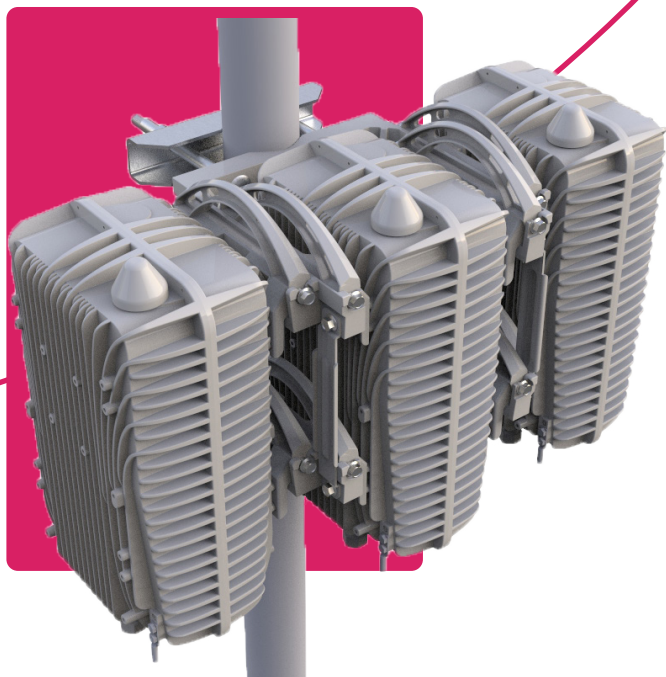


FW-600

B 4 2 / 4 3 , B 4 8



FW-600



A POWERFUL NETWORK SOLUTION THAT PUSHES BOUNDARIES

The FW-600 is an ultra-high capacity, all integrated multicarrier LTE base station system. It is designed as a response to today's broadband connectivity needs in rural and dense suburban markets.

This powerful single band base station can easily match or out-perform most MIMO commercial solutions in the Band 48 or Band 42/43 spectrum. Paired with passive beamforming antenna systems, the FW-600 brings spectral efficiency and capacity to new horizons.

THE FW-600 B42/43, B48 SINGLE BAND ARCHITECTURE FEATURES:

- 3 Carriers and up to 3 Beams
- Peak Throughput: 450 Mbps per Base Unit
- Uplink* and Downlink (Up to 3CC*) Carrier Aggregation
- 256 QAM* Downlink and 64 QAM Uplink
- Mobility Support*
- 10 MHz and 20 MHz Channel Bandwidths



**CBRS Category B
Certified (FW6-B48-00-NA)**



**Supports Carrier
Aggregation**



High Capacity

FW-600 B42/43, B48

SPECIFICATIONS

MODELS		
FW6-B42-43-EU / FW6-B48-00-NA		
	FW6-B48-00-NA	FW6-B42-43-EU
RADIO SPECIFICATION		
Frequency Band	TDD LTE Bands 48	TDD LTE Bands 42/43
Max. Transmit Power	33 dBm/port (+ 3 dBm MIMO)	36 dBm/port (+ 3 dBm MIMO)
Channel Bandwidth	10, 20 MHz	
MIMO	6Tx x 6Rx (several possible MIMO configurations)	
LTE Compliance	3GPP Release 10 (SW upgrade to Release 13)	
PERFORMANCE & ATTRIBUTES		
Number of UEs Supported	Up to 288 UEs per base unit	
Carrier Aggregation	Supports contiguous and non-contiguous 2CC, 3CC* configuration	
Throughput DL TDD Config 2-7	110 Mbps (140 Mbps*) per Carrier 330 Mbps (420 Mbps*) per base unit - 3 x Carriers	
Throughput UL TDD Config 2-7	11 Mbps per Carrier 33 Mbps per base unit - 3 x Carriers	
Operating Mode	TD-LTE supports all standard frame configurations	
Power Consumption	180 W	480 W
Power	48V DC	
Connectivity	1 x Copper 1000BaseT 1 x SFP 1 x PPS TNC Connector 6 x 2.2-5 RF Connectors	
Synchronization	Integral GPS receiver (GPS, GLONASS, BeiDou)	
Embedded EPC	Software Option	
OAM		
Configuration	WebUI, CLI and EMS	
EMS Integration	RESTCONF	
OAM Protocols	RESTCONF, HTTPS, SSH, SNMPv2c	
MECHANICAL		
Dimensions (LxWxD) Base Unit	19.4" x 12" x 8.4" (492 mm x 304 mm x 160 mm)	
Survival Wind Speed	Up to 125 mph (200 kph)	
Weight	25.0 kg	
Bracket Weight	33.1 lbs (15 kg) – Supports up to 3 x FW-600 units	
Operational Temperature	-40 °F to 140 °F (-40 °C to 60 °C)	

*Roadmap item

FW-600

PROPOSED DEPLOYMENT CONFIGURATIONS

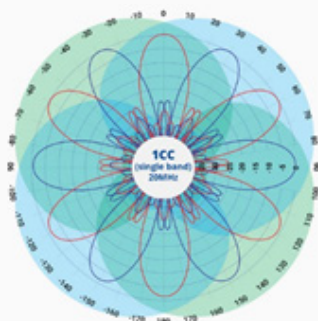
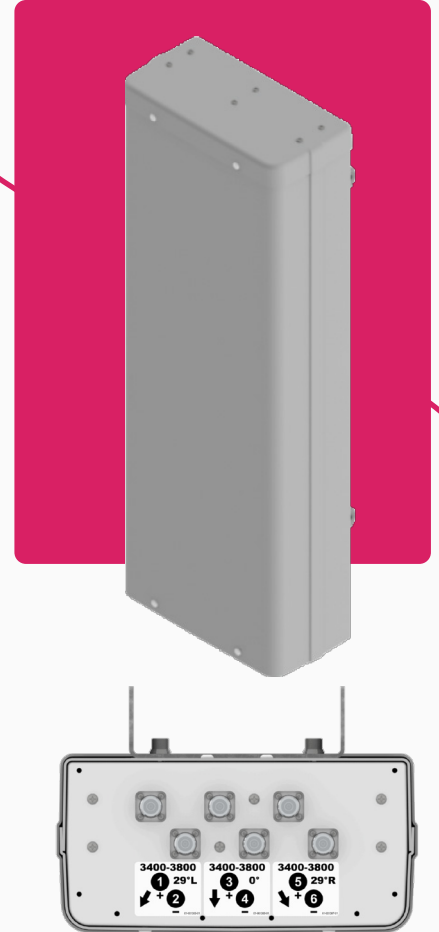


Here is one of the recommended antenna pairings and its deployment configuration.

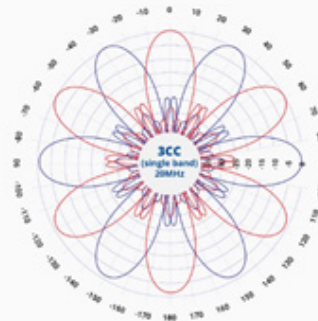
FW6-MBA3F-H3AA:

THREE-BEAM SPECIAL EVENTS ANTENNA

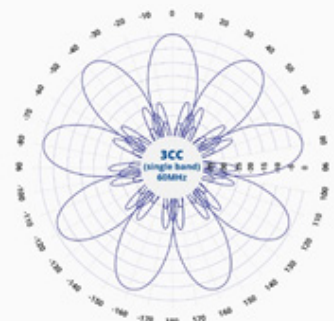
This CCI Multibeam Antenna contains Three Independent LTE Optimized Beams with 2x2 MIMO capability. It enables maximum spectrum re-use by sectorization, greatly increasing network capacity.



1CC = 20 MHz (f1)
1CC = 20 MHz (f1)



2CC = 40 MHz (f1, f2)
1CC = 20 MHz (f3)



3CC = 60 MHz (f1, f2, f3)

FW-600 B42/43, B48

ANTENNA SPECIFICATIONS

ELECTRICAL		
	Ports	6 x High Band Ports
	Frequency Range	3400-3800 MHz
	Gain*	22.3 dBi
	Azimuth Beamwidth (-3dB)	17.6°
	Azimuth Beam Crossover	11.1 dB
	Elevation Beamwidth (-3dB)	5.4°
	Electrical Downtilt	4°
	Elevation Sidelobes (1st Upper)	< -22 dB
	Front-to-Back Ratio @180°	> 35 dB
	Cross-Polar Discrimination (at Peak)	> 18 dB
	Cross-Polar Port-to-Port Isolation	> 25 dB
	Interbeam Co-Pol Isolation (Adjacent Beams)	> 25 dB
	Interbeam Co-Pol Isolation (Non-Adjacent Beams) (Worst Case)	> 15 dB
	Voltage Standing Wave Ratio (VSWR)	< 1.5:1
	Passive Intermodulation (2x20W)	≤ -140 dBc
	Input Power Continuous Wave (CW)	200 watts
	Polarization	Dual Pol 45°
	Input Impedance	50 ohms
	Lightning Protection	DC Ground
*Electrical specifications follow document "Recommendation on Base Station Antenna Standards" (BASTA) V9.6.		
MECHANICAL		
	Dimensions (LxWxD)	35.6" x 12.9" x 6.3" (904 mm x 328 mm x 160 mm)
	Survival Wind Speed	Up to 150 mph (240 km/hr)
	Front Wind load	99 lbs (440 N) @ 100 mph (161 kph)
	Side Wind Load	53 lbs (237 N) @ 100 mph (161 kph)
	Equivalent Flat Plate Area	3.9 ft² (0.4 m²)
	Weight**	22.5 lbs (10.2 kg)
	Connector	6 x 4.3-10 female
	Mounting Pole	2" to 5" (5 cm to 12 cm)
** Weight excludes mounting		



YOUR NETWORK. OUR SOLUTIONS.

CONTACT US

Tel: +1 800.301.4962
info@blinqnetworks.com
www.blinqnetworks.com

140 Renfrew Drive, Markham
ON, L3R 6B3, Canada
© 2018-2022 BLiNQ Networks a CCI company