



CONNECTING COMMUNITIES THROUGH  
**WIRELESS SOLUTIONS**



FWC-122HG-35

**FWC-122HG-35**



## FWC-122HG-35

### SUMMARY



# FWC-122HG-35



## CATEGORY 12 SINGLE MODE OUTDOOR CPE

BLiNQ's FWC-122HG-35 is a Category 12 outdoor LTE CPE that supports 40 MHz carrier aggregation. Its internal high gain antenna promises to maximize reach and capacity.

Featuring a password protected built-in web server, this high performing CPE can be configured with ease from anywhere in the world.



**256QAM  
Downlink**



**2x2 MIMO with  
80 MHz CA Max.**



**802.3at POE  
Powered**



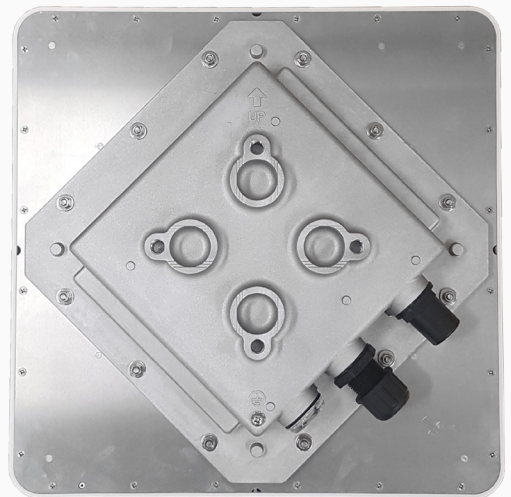
**Supports 1.8V  
and 3V SIM/USIM**

# FWC-122HG-35

## SUMMARY

### HERE ARE SOME KEY FEATURES:

- Supports TDD-LTE Band 48, 42/43
- 3GPP Release 12 Compliant
- Supports up to UE LTE Category 12/13/15 PHY Rate \*
- Supports 4x4 MIMO with 40 MHz CA Max.
- Supports DL 256QAM with DL 2x2 MIMO only up to 80 MHz CA
- Supports UL 2Tx (CDD / UL\_CA/ UL\_MIMO)
- Physical 2Tx & 4Rx in RF Front End
- Supports 1.8V/3V SIM and USIM Card for LTE Mode
- Supports Dynamic Host Configuration Protocol
- Built-in Web Server for Web-Based Configuration
- Password Protected Access and Configuration
- Supports IEEE 802.3, IEEE 802.3u, 802.3ab (10/100/1000 Mbps)
- 802.3at POE standard
- Supports NAT/Tunnel/Bridge/Router Mode
- Supports VPN Pass-Through
- IP67 Environmental Rating



\* TDD Cat 12 with 4x4 + 40 MHz carrier aggregation peak throughput is around 440 Mbps for downlink @ TDD Config 2 SSF 7 and UL CA + 64QAM is around 30 Mbps.

# FWC-122HG-35

## SPECIFICATIONS



### MECHANICAL, ENVIRONMENTAL & REGULATORY

	<b>Dimension (L x W x H)</b>	13.4" x 13.4" x 2.95" (340 mm x 340 mm x 75 mm)
	<b>Weight</b>	4.41 lbs (2 kg)
	<b>PoE</b>	802.3at
	<b>Power</b>	Input: Universal range 100~240V AC Output: 56 VDC
	<b>Reset/Reboot Button</b>	Tactile Switch (inside box)
	<b>Operating Humidity</b>	5% to 95%
	<b>Storage Humidity</b>	5% to 95%
	<b>Operational Temperature</b>	-40°F to 131°F (-40°C to 55°C)
	<b>Storage Temperature</b>	-40°F to 158°F (-40°C to 70°C)
	<b>FCC</b>	FCC Part 96 Certified
	<b>LTE</b>	EN 301 908-13 V11.1.1
	<b>Safety</b>	IEC 60950-22:2016, IEC 62368-1:2014 compliant
	<b>EMC</b>	EN 301 489-1 / -4 / -17 / -24
	<b>Environmental</b>	IP67
	<b>CBRS</b>	CBSD Cat. B

### NETWORKING & OAM

	<b>LTE BB ASIC</b>	GDM7243A (GCT Semiconductor)
	<b>LTE RF ASIC</b>	GRF7243A (GCT Semiconductor)
	<b>Ethernet LAN Port</b>	1 x RJ-45 Port 10/100/1000 Auto-Sensing, Auto-MDX
	<b>LED Indicators</b>	Signal Strength / LAN / SIM
	<b>SIM Function</b>	1.8V, 3V SIM and USIM card
	<b>PIN/PUK Code</b>	Yes (Ready with chipset)
	<b>Stack</b>	IPv4, IPv6, Dual

# FWC-122HG-35

## SPECIFICATIONS



	<b>NAT/Dynamic NAT</b>	Yes
	<b>Router Mode</b>	Yes
	<b>Bridge Mode</b>	Yes
	<b>Tunnel Mode</b>	GRE, L2TP, L2TP with IPsec, PPTP
	<b>DCHP Server in LAN</b>	Yes (For NAT mode, support 253 clients max.)
	<b>DNS Relay</b>	Yes (For NAT mode)
	<b>DDNS Client</b>	Yes (For NAT mode)
	<b>VPN Pass-Through – IPSec/PPTP/L2TP</b>	Yes (For NAT mode)
	<b>UPNP</b>	Yes
	<b>HTTP(s) Server</b>	Yes
	<b>ALG Support (FTP/SIP/...)</b>	Yes
	<b>Networking Debug/Testing</b>	IPerf, Ping, Traceroute
<b>RADIO SPECIFICATION</b>		
	<b>Peak DL Throughput</b>	440 Mbps (4x4 + 40 MHz CA, TDD Config 2-7)
	<b>Peak UL Throughput</b>	30 Mbps (TDD Config 2-7 with 64 QAM)
	<b>Carrier Aggregation</b>	2CC up to 20 MHz each
	<b>Frequency Band</b>	TDD LTE Band 48, 42/43
	<b>DL Carrier Aggregation Bandwidth</b>	80 MHz max.
	<b>UL Carrier Aggregation Bandwidth</b>	40 MHz max. with 2CC
	<b>UL 2Tx Diversity</b>	23 dBm
	<b>UL 2Tx CA</b>	23 dBm
	<b>UL 2Tx MIMO</b>	23 dBm
	<b>Tx Power Dynamic Range</b>	63 dB
	<b>Receiver Sensitivity (@ 20 MHz)</b>	-95 dBm
	<b>Channel Bandwidth</b>	10, 20 MHz

# FWC-122HG-35

## SPECIFICATIONS



	<b>DL Carrier Aggregation Matrix</b>	DL MIMO 2x2 – Intra, Contiguous & Non-Contiguous DL MIMO 4x4 – Intra Band Only
	<b>DL Modulation</b>	4x4 MIMO with 64 QAM Max. 2x2 MIMO with 256 QAM Max.
	<b>UL Modulation</b>	Max. 64 QAM
	<b>LTE Compliance</b>	3GPP Release 12
	<b>Antenna Peak Gain</b>	15 dBi
<b>DEVICE MANAGEMENT &amp; SECURITY</b>		
	<b>WEB</b>	Yes
	<b>SNMP</b>	Ready for IoT
	<b>TR-069</b>	Ready for IoT
	<b>FOTA Upgrade</b>	Yes
	<b>System Log/Diagnostic</b>	Yes (Chipset embedded tool)
	<b>Username/Password Configuration</b>	Yes
	<b>L2/L3 Firewall</b>	Basic Firewall/Port Forwarding/Port Trigger/DMZ/Remote WAN Ping/Remote Web Access Control
	<b>Time Zone Configuration</b>	Yes
	<b>Dual Firmware</b>	Yes (Switchable)
	<b>Firmware Verification</b>	Yes (Use digital signal to verify installed software)



# YOUR NETWORK. OUR SOLUTIONS.



---

**CONTACT US**

Tel: +1 800.301.4962  
[info@blinqnetworks.com](mailto:info@blinqnetworks.com)  
[www.blinqnetworks.com](http://www.blinqnetworks.com)

140 Renfrew Drive, Markham  
ON, L3R 6B3, Canada  
© 2018-2022 BLiNQ Networks a CCI company