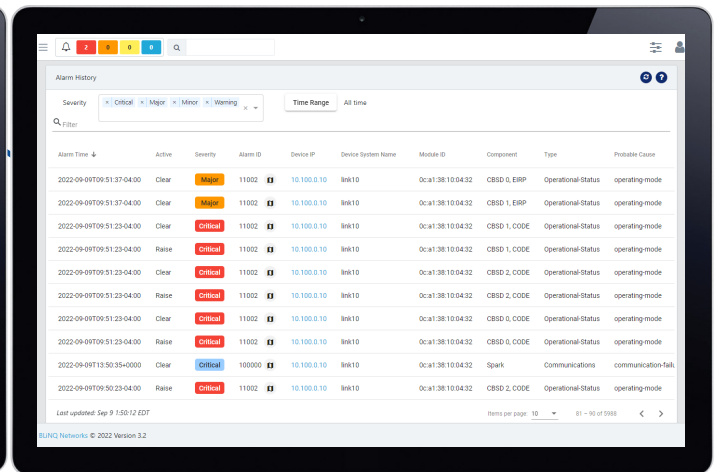
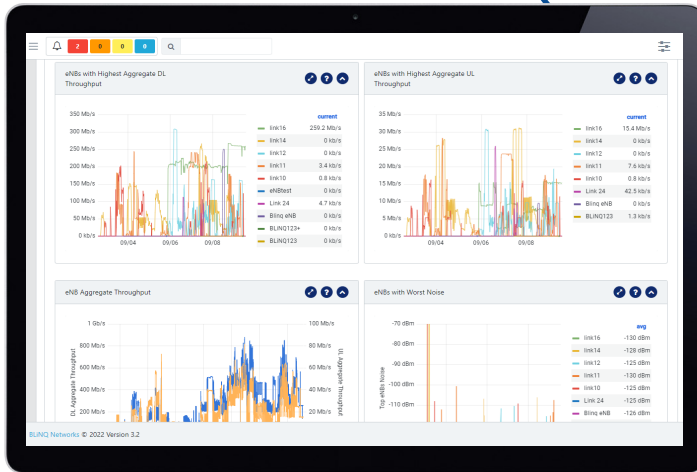


# NETLINQ EMS





**DESIGNED WITH  
THE FUTURE  
IN MIND.**

NetLiNQ EMS is a component of BLiNQ Networks NetLiNQ suite of products. It enables the service provider to provision, deploy, and manage BLiNQ fixed wireless access devices easily and rapidly.

NetLiNQ EMS uses container-based architecture and can run on bare metal or in a virtualized environment. Its components are based on proven and scalable open source software and run containerized, using a Docker engine.

# ALL YOUR DEVICES, ALL YOUR DATA, ONE DASHBOARD.



## Centralized Dashboard



## Bulk Operations



## Data Management



## Performance Graphs



## Alarms Management



## Inventory Exports

- **Centralized Dashboard** to track your network health in real time.
- **Bulk Operations** support for simultaneous configurations or software upgrades.
- **Intuitive WebUI** that is easy to navigate and Contextual Help on every page that will provide guidance if needed
- Fast, Flexible **Data Management** that facilitates network health evaluation.
- **Backup & Restore** data in the event of a crash.
- Real-Time **Performance Graphs** enable prompt response in managing devices based on the needs of the network.
- Dynamic **Network Discovery** that allows for newly deployed eNBs to be added automatically.
- **Alarms Management** maintains alarms/events by level of severity and features customizable alarms based on KPIs.
- **Inventory Exports by Type** (eNBs or CPEs) as .csv files





# YOUR NETWORK. OUR SOLUTIONS.

---

**CONTACT US**

Tel: +1 800.301.4962  
[info@blinqnetworks.com](mailto:info@blinqnetworks.com)  
[www.blinqnetworks.com](http://www.blinqnetworks.com)

140 Renfrew Drive, Markham  
ON, L3R 6B3, Canada  
© 2018-2022 BLiNQ Networks a CCI company