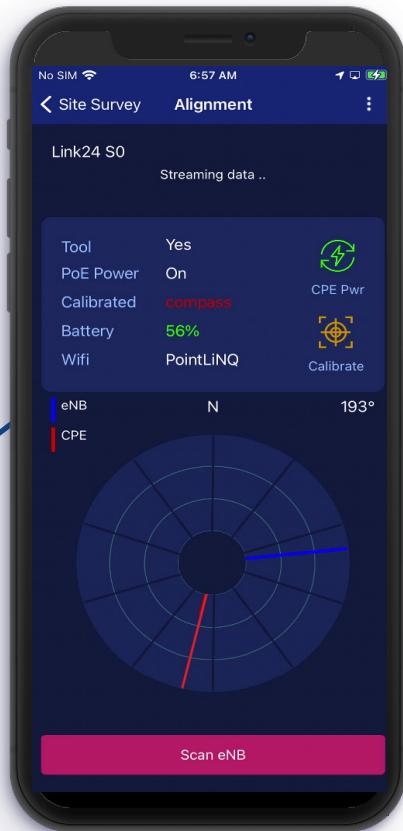


CONNECTING COMMUNITIES THROUGH
WIRELESS SOLUTIONS



OPTIMAL POINTING AND PERFORMANCE

PointLiNQ is an automated solution toolset which reduces hardware installation time, accurately aligning CPE to eNB, and predicts performance in various environments. This easy-to-use tool attains a high accuracy of alignment without the need for experienced installers.

How does it work?

The PointLiNQ Installation Suite is composed of a PointLiNQ Portal, PointLiNQ Tool, and associated App (available in Android and iOS) designed to guide you through all pre-installation and installation steps.

Using Machine Learning (ML) algorithms and statistic channel models, the App's predictions will help select the best installation location and best serving eNB with greater accuracy, to provide the highest possible link throughput.



**Survey Prior
to Installation**



Iperf Speed Test
from selected eNB



**Configurable
eNB List**



**CBSD Single Step
Registration**

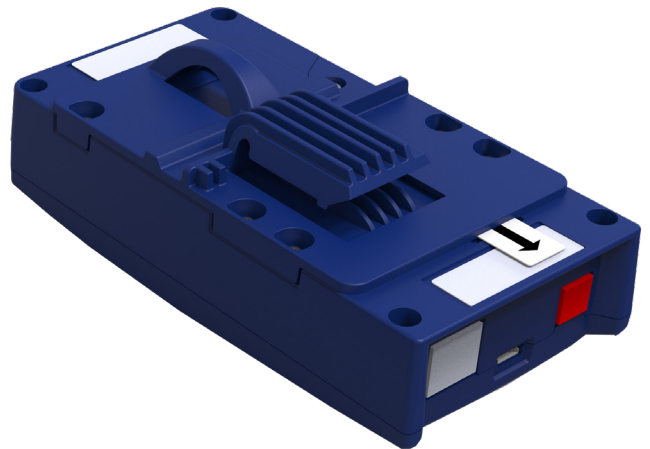


**RSRP Estimates
of eNBs in Vicinity**



THE KEY FEATURES AND BENEFITS OF POINTLINQ INCLUDE:

- **Highly accurate CPE link alignment**
- **Performs Survey Prior to Installation**
- **Generates List of Available ENBs from Portal**
- **Performance Predictions**
The app computes performance predictions for different azimuth/elevation positions to determine ideal CPE alignment.
- **Real Time Connection Statistics**
Scans and collects KPI values.
- **CPE CBSD Registration**
Performs single step CBSD registration right from the app.
- **Iperf Speed Test**
Provides UL and DL throughput values at the end of alignment process.
- **Generates Final Report**
Reports are stored in the Portal and can be used for seasonal predictions.



BATTERY	
Model	Panasonic – NCR18650GA LI-ION (recommended)
Quantity	2
Nominal Voltage	2 x 3.6 V
Charging Time	4.5 Hours
Charging Current	1.45 A
Operational Duration	2 hours
WIRELESS CONNECTIVITY	
Communications	1T1R Wi-Fi 802.11 b/g/n (2.4G)
Security/Encryption	AES128/256-CBC
Authentication	WEP64/128, AES, WPA, WPA2, WAPI
OUTPUT	
Connectors	10/100BASE-T Ethernet with 802.3AF POE PSE (15.4 W)
Console	USB Virtual Serial Ports (VCP)
COVERAGE*	
Azimuth	28° + CPE Azimuth Antenna BW**
Elevation	25° + CPE Elevation Antenna BW**
MECHANICAL & ENVIRONMENTAL	
Dimensions (L x W x D)	15 cm x 7.8 cm x 5.5 cm (5.9" x 3.07" x 2.16")
Weight	300 g (0.66 lbs)
Operational Temperature	-20 °C to 60 °C (-4 °F to 140 °F)
Charging Temperature	10 °C to 45 °C (50 °F to 113 °F)
Storage Temperature	-20 °C to 60 °C (-4 °F to 140 °F)

* Since the PointLiNQ Tool works in conjunction with the CPE and the PointLiNQ App, its azimuth and elevation specifications will be tied to the CPE Bracket which has:

- Azimuth – 5 fix positions; 7° granularity
- Elevation – 6 fix positions; 5° granularity

**Refer to BLiNQ CPE Specifications for CPE Antenna BW.

An aerial photograph showing a large body of water (a lake or reservoir) in the center. A road curves along the left side of the water, surrounded by dense green forest. In the foreground, a multi-lane highway runs parallel to the forest. The background features rolling hills under a blue sky with scattered clouds.

YOUR NETWORK. OUR SOLUTIONS.

CONTACT US

Tel: +1 800.301.4962
info@blinqnetworks.com
www.blinqnetworks.com

140 Renfrew Drive, Markham
ON, L3R 6B3, Canada
© 2018-2022 BLiNQ Networks a CCI company