

CONNECTING COMMUNITIES THROUGH

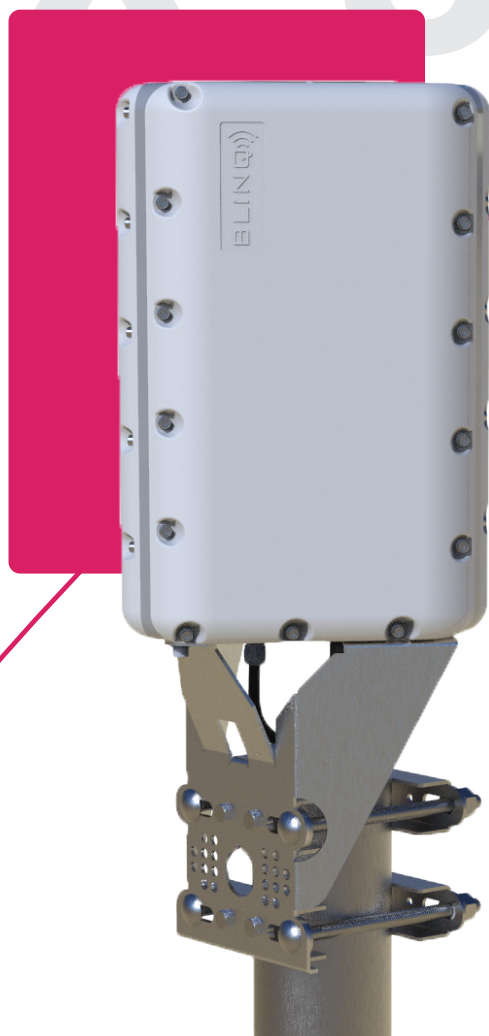
WIRELESS SOLUTIONS



X-300i



X-300i



THE MOST COST EFFICIENT LTE COVERAGE

The X-300i Small Cell provides the most cost-efficient LTE Coverage in response to today's broadband connectivity needs. Following BLiNQ's unique technology approach, the X-300i combines high baseband capability with Active Antenna System Concepts to provide a true software defined radio solution.

This eNB can be mounted indoors on concrete or drop ceilings and outdoors on a mast or street lamp. It covers 270° of azimuth, powered by an integrated adaptive antenna system of 3 x 90° sectors.

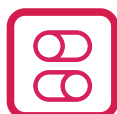
With the X-300i, operators will be able to route capacity as per time of day usage to a more focused distribution by using carrier aggregation, thus providing coverage *where* it is needed, *when* it is needed.



**Supports Carrier
Aggregation**



**CBRS Category B
Certified**



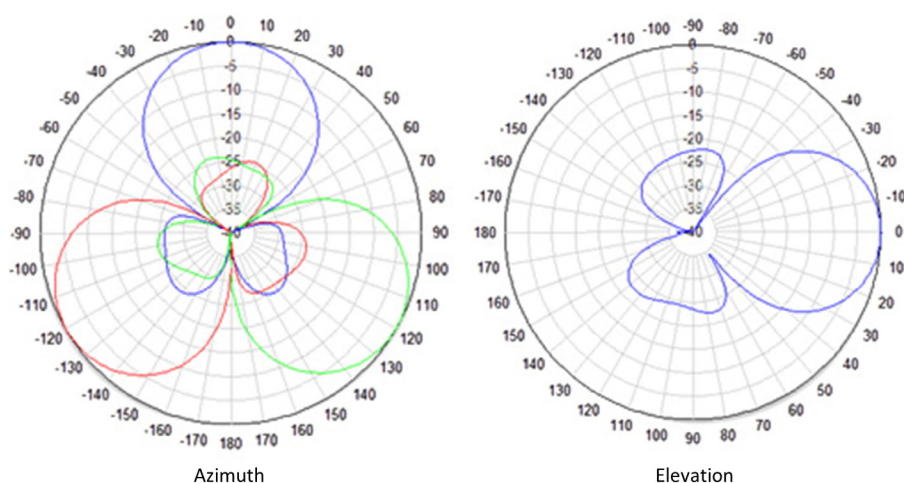
**Dynamic Capacity
Switching**

HERE ARE SOME KEY FEATURES:

- 3 Sectors with up to 3 Carriers
- Supports all LTE TDD Configurations
- Supports 10 MHz and 20 MHz
- Supports Uplink* and Downlink Carrier Aggregation with different channel sizes (up to 3CC)
- 270° Azimuth Coverage
- Supports 256 QAM* Downlink and 64 QAM Uplink
- Supports Mobility
- Available in DC Powered or POE Powered SKUs

X-300i

SPECIFICATIONS



MODEL SERIES		
X3I-35-00-WW-OD / X3I-35-00-WW-POE		
	X3I-35-00-WW-OD	X3I-35-00-WW-POE
RADIO SPECIFICATION		
Frequency Band	TDD LTE Band 42/43, 48	
EIRP Per Sector (Bands 42, 43, 48)	33 dBm	
Channel Bandwidth	10, 20 MHz	
MIMO	2TX x 2RX per Sector	
LTE Compliance	3GPP Release 10 (SW upgrade to Release 13)	
PERFORMANCE & ATTRIBUTES		
Number of UEs Supported	Up to 288 UEs per Base Unit	
Carrier Aggregation	Supports contiguous and non-contiguous 2CC and 3CC configuration	
Throughput DL TDD Config 2-7	110 Mbps (140 Mbps*) per Carrier 330 Mbps (420 Mbps*) per base unit - 3 x Carriers	
Throughput UL TDD Config 2-7	11 Mbps per Carrier 33 Mbps per Base Unit - 3 x Carriers	
Operating Mode	TDD-LTE (Supports all standard frame configurations)	
Power Consumption	70 W	
Power	48V DC	POE
Connectivity	1 x Copper 1000BaseT 1 x SFP (Optional)	1 x Copper 1000BaseT
Synchronization	Integral GPS receiver (GPS, GLONASS, BeiDou)	
CBRS	CBSD Category B – with 2 W aggregate EIRP certified	
Embedded EPC	Software Option	

*Roadmap item

X-300i

SPECIFICATIONS

	X3I-35-00-WW-OD	X3I-35-00-WW-POE
OPERATIONS, ADMINISTRATION AND MAINTENANCE (OAM)		
Configuration	WebUI, CLI and EMS	
EMS Integration	RESTCONF	
OAM Protocols	RESTCONF, HTTPS, SSH, SNMPv2c	
ANTENNA SPECIFICATIONS		
Gain	12 dBi	
Azimuth Coverage	270° coverage (90° per sector)	
Azimuth Beamwidth (-3 dB)	45°	
Azimuth Beamwidth (-15 dB)	90°	
Elevation Beamwidth (-3 dB)	40°	
Elevation Beamwidth (-15 dB)	80°	
Electrical Downtilt	0°	
Azimuth Sidelobe	< -25 dB (Typ.)	
Front-to-Back Ratio @180°	> 30 dB (Typ.)	
Co-Polar Port-to-Port Isolation	15 dB (Typ.)	
Cross-Polarization Port-to-Port Isolation	> 20dB (Typ.)	
Max. Voltage Standing Wave Ratio (VSWR)	1.5:1	
Polarization	Dual Pol 45°	
MECHANICAL		
Dimensions (L x W x D)	13" x 9.05" x 8.1" (330 x 230 x 206 mm)	
Weight	11.02 lbs (5 kg)	
Survival Wind Speed	Up to 124 mph (200 km/hr)	
Mast Diameter Supported	2.5" to 3.5" (63.5 to 88.9 mm)	
Operational Temperature	-40 °F to 140 °F (-40 °C to 60 °C)	
Enclosure	IP67	
Lightning Protection	DC Ground	



YOUR NETWORK. OUR SOLUTIONS.

CONTACT US

Tel: +1 800.301.4962
info@blinqnetworks.com
www.blinqnetworks.com

140 Renfrew Drive, Markham
ON, L3R 6B3, Canada
© 2018-2022 BLiNQ Networks a CCI company