



CONNECTING COMMUNITIES THROUGH
WIRELESS SOLUTIONS



FW-300i

FW-300i



All-In-One Solution



Ease of Deployment



**CBRS Category B
Certified**



**Supports Carrier
Aggregation**

3X COVERAGE & CAPACITY AT $\frac{1}{3}$ RD THE COST

The FW-300i is an integrated wireless solution that is easy to set up, fits anywhere, and provides incredible network capacity. It is a tri-sector and tri-carrier Long-Term Evolution (LTE) Evolved Node B (eNB) with the capability to operate in the following bands: 42, 43 and 48 (Citizens Broadband Radio Service or CBRS).

From the side of a building or water tower, the FW-300i can be deployed effortlessly, giving 3x the capacity at $\frac{1}{3}$ the price.

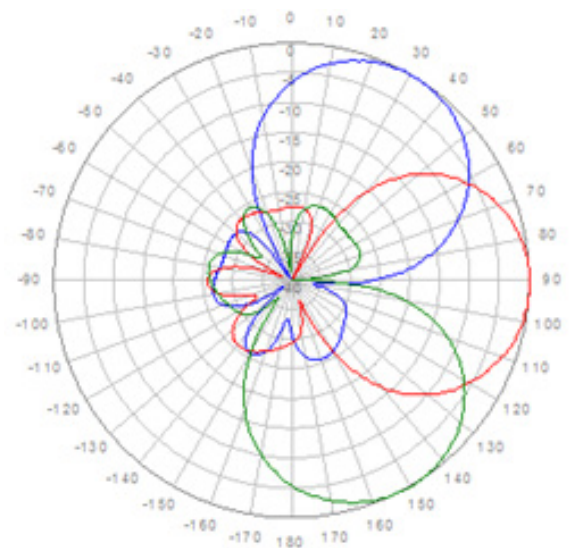
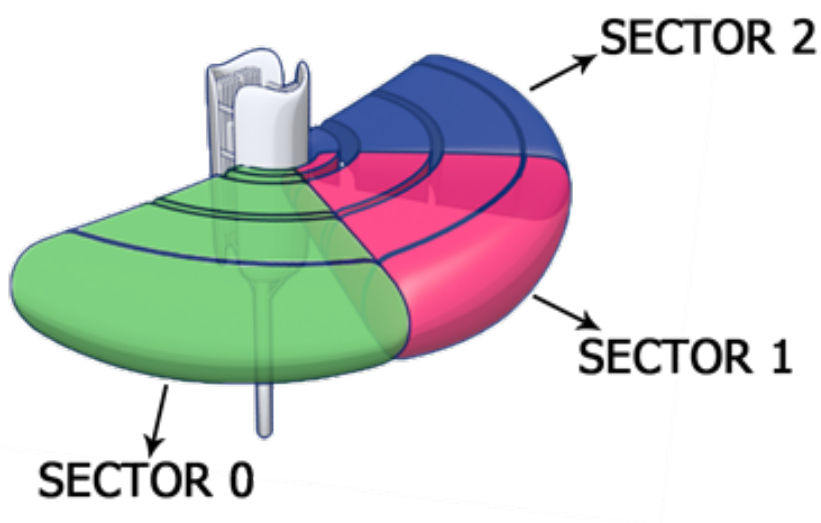
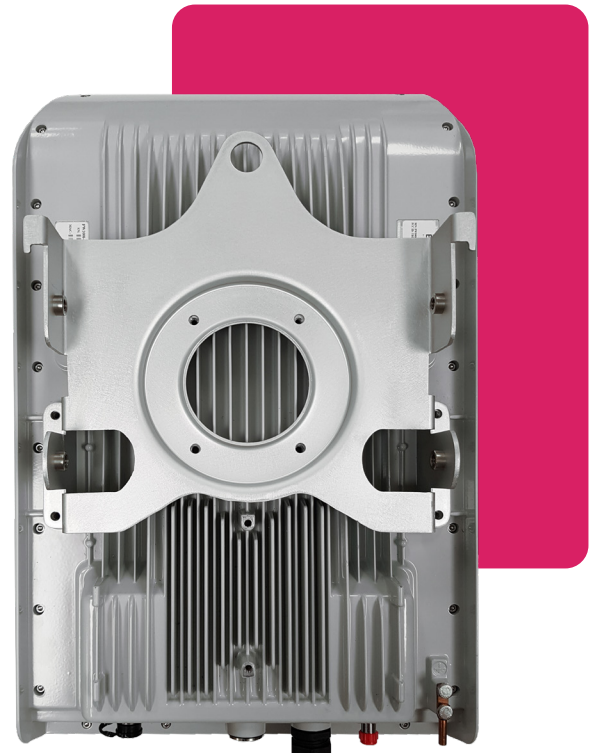
Whether you want to expand your network to remote communities or to busy urban intersections, this OnGo Certified product helps you bring LTE connectivity to anyone, anywhere.

FW-300i

FEATURES

HERE ARE SOME KEY FEATURES:

- 'All-In-One' Fully Integrated Solution
- CBRs Category B Certified
- Supports all LTE TDD Configurations
- Supports 10 MHz and 20 MHz
- Supports Downlink Carrier Aggregation (up to 3CC)
- 180° Azimuth Coverage
- Features Standard 2x2 MIMO Configurations
- Supports IPv6
- Supports Mobility



FW-300i

SPECIFICATIONS



MODELS		
FW3-B48-00-HP-NA / FW3-B42-43-HP-EU		
	FW3-B48-00-HP-NA	FW3-B42-43-HP-EU
RADIO SPECIFICATION		
Frequency Band	3.55-3.70 GHz (LTE Band 48 - CBRS)	3.40-3.80 GHz (LTE Band 42/43)
Transmit Power	-10 dBm up to + 30 dBm per TX Pout (add 3 dBm for aggregate power)	-10 dBm up to + 36 dBm per TX Pout (add 3 dBm for aggregate power)
EIRP	Up to 53 dBm	
Channel Bandwidth	10, 20 MHz	
MIMO	2TX x 2RX per Sector	
LTE Compliance	3GPP Release 10 (SW upgrade to Release 13)	
PERFORMANCE & ATTRIBUTES		
Number of UEs Supported	Up to 288 UEs per Base Unit	
Carrier Aggregation	Supports contiguous and non-contiguous 2CC, 3CC Covers full CBRS band (150 MHz)	
Throughput DL TDD Config 2-7	Up to 110 Mbps per Carrier Up to 330 Mbps per Base Unit - 3 x Carriers	
Throughput UL TDD Config 2-7	11 Mbps per Carrier 33 Mbps per Base Unit - 3 x Carriers	
Operating Mode	TD-LTE	
Power Consumption	180 W maximum	
Power	48 VDC	
Connectivity	Default: 1 x Copper 1000BaseT; Optional: 1 x SFP	
Synchronization	Integral GPS antenna (GPS, GLONASS, BeiDou), Optional: External GPS	
Citizens Broadband Radio Service (CBRS)	CBSD Category B Certified	
Embedded Evolved Packet Core (EPC)	Software Option	
OPERATIONS, ADMINISTRATION AND MAINTENANCE (OAM)		
Configuration	WebUI, CLI, TR-069 and EMS	
EMS Integration	RESTCONF	
OAM Protocols	RESTCONF, HTTPS, SSH, SNMPv2c and TR-069	
ANTENNA SPECIFICATIONS BANDS 42/43, 48		
Gain	17 dBi	
Azimuth Coverage (-5 dB)	180°	
Azimuth Beamwidth (-3 dB)	45°	

FW-300i

SPECIFICATIONS



	FW3-B48-00-HP-NA	FW3-B42-43-HP-EU
Azimuth Beamwidth (-5 dB)	60°	
Elevation Beamwidth (-3 dB)	10°	
Electrical Downtilt	0°	
Azimuth Sidelobe	< -25 dB (Typ.)	
Front-to-Back Ratio @180 Degrees	> 30 dB (Typ.)	
Co-Polar Port-to-Port Isolation	15 dB (Typ.)	
Cross-Polarization Port-to-Port Isolation	> 20 dB (Typ.)	
Max. Voltage Standing Wave Ratio (VSWR)	1.5:1	
Polarization	Dual Pol 45°	
Lightning Protection	DC Ground	
MECHANICAL		
Dimensions (L x W x D)	13.78" x 22.4" x 8.9" (350 x 570 x 227 mm)	
Survival Wind Speed	Up to 124 mph (200 km/hour)	
Weight	28.7 lbs. (13.0 Kg)	
Operational Temperature	-40 °F to 60 °F (-40 °C to 60 °C)	
Mechanical Uptilt/Downtilt	0° - 10°	
Ingress Protection	IP56	

YOUR NETWORK. OUR SOLUTIONS.



CONTACT US

Tel: +1.800.301.4962
info@blinqnetworks.com
www.blinqnetworks.com

140 Renfrew Drive, Markham
ON, L3R 6B3, Canada
© 2019-2023 BLiNQ Networks