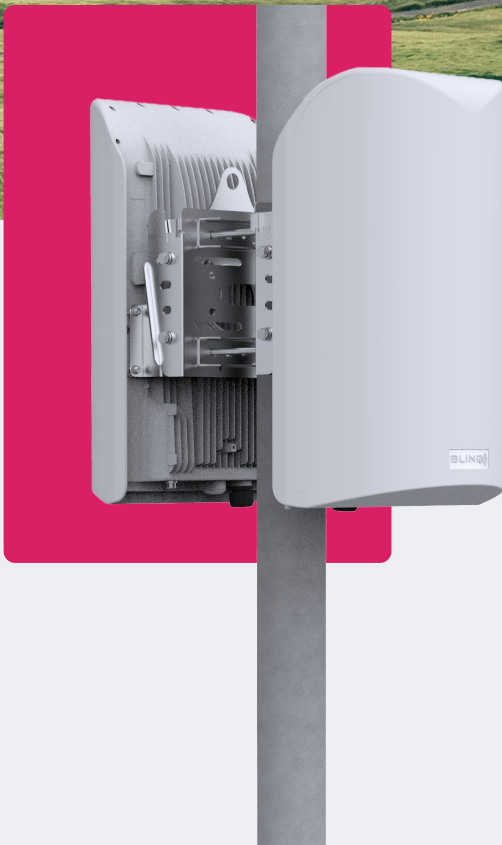




## CONNECTING COMMUNITIES THROUGH WIRELESS SOLUTIONS



# FW-300i

## FW-300i LAA



DUAL BAND

# FW-300i LAA



**All-In-One Solution**



**Ease of Deployment**



**CBRS Category B  
Certified**



**Unique Dual Band  
Design**

## GREATER FLEXIBILITY; INCREASED CAPACITY

The BLiNQ Dual Band FW-300i LAA system is a one sector Long-Term Evolution (LTE) Evolved Node B (eNB) with the ability to operate in both Band 46 (UNII-1 and UNII-3) and Band 48 (Citizens Broadband Radio Service - CBRS).

Designed to provide carrier redundancy, this dual band wireless radio system has 3 CC capabilities when using one or both bands, providing greater flexibility to users looking for more spectrum in order to provide higher capacity.

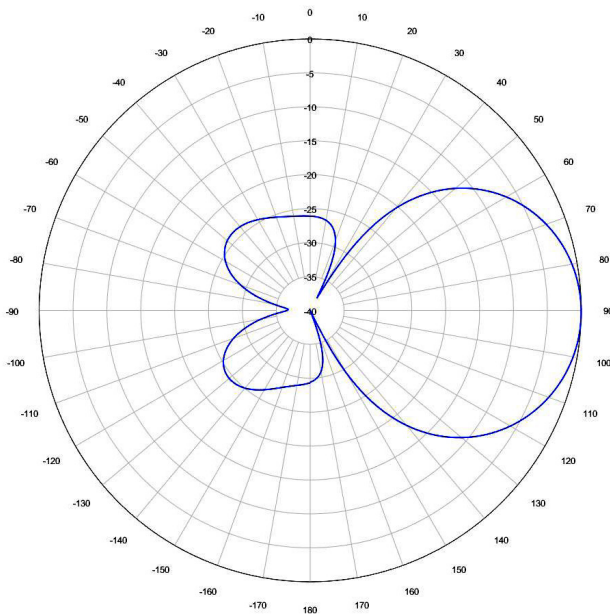
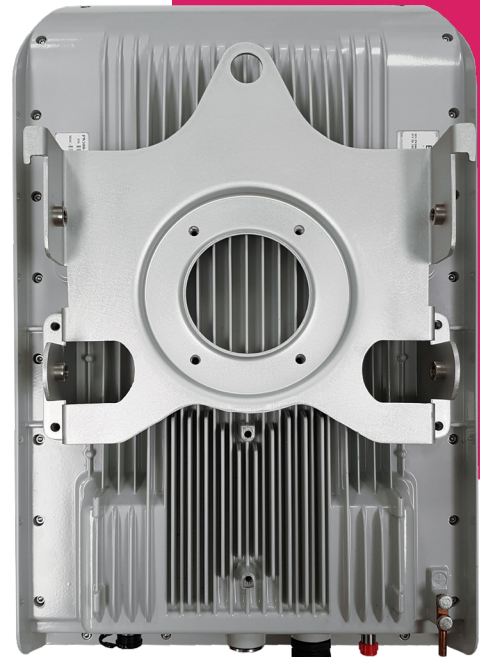
From the side of a building or a water tower, this simple solution fits easily, bringing LTE connectivity to anyone, anywhere.

## FW-300i LAA

### FEATURES

#### HERE ARE SOME KEY FEATURES:

- 'All-In-One' Fully Integrated Solution
- Features Self Channel Assignment
- Supports Downlink Carrier Aggregation (up to 3CC)
- CBRs Category B Certified
- Supports all LTE TDD Configurations
- 60° Azimuth Coverage
- Features Standard 2x2 MIMO Configurations
- Network Management: WebUI, CLI, TR-069 and EMS
- Supports Mobility
- Supports IPv6



# FW-300i LAA

## SPECIFICATIONS



MODEL		
FW3-B48-46-NA		
RADIO SPECIFICATION		
Frequency Band	3.55-3.70 GHz (LTE Band 48 - CBRS) 5.15-5.25 GHz (UNII-1) and 5.725-5.85 GHz (UNII-3)	
Transmit Power	B48:	
	10 MHz • 30 dBm/Antenna Port (1CC) • 30 dBm/Antenna Port (2CC)	20 MHz • 33 dBm/Antenna Port (1CC) • 30 dBm/Antenna Port (2CC)
	B46 (UNII-1 and UNII-3):	
	10 MHz FCC Compliant: 13 dBm/Antenna Port Max. Transmit Pout: 23 dBm/Antenna Port	20 MHz FCC Compliant: 16 dBm/Antenna Port Max. Transmit Pout: 23 dBm/Antenna Port
EIRP	B48:	
	10 MHz • 47 dBm/Antenna Port (1CC) • 47 dBm/Antenna Port (2CC)	20 MHz • 50 dBm/Antenna Port (1CC) • 47 dBm/Antenna Port (2CC)
	B46 (UNII-1 and UNII-3):	
	10 MHz 33 dBm (Aggregate Power per MIMO)	20 MHz 36 dBm (Aggregate Power per MIMO)
Channel Bandwidth	10, 20 MHz	
MIMO	2TX x 2RX per Sector	
LTE Compliance	3GPP Release 10 (SW upgrade to Release 13)	
PERFORMANCE & ATTRIBUTES		
Number of UEs Supported	Up to 96 UEs per Base Unit	
Carrier Aggregation	Supports contiguous and non-contiguous 2CC, 3CC Covers full CBRS band (150 MHz)	
Throughput DL TDD Config 2-7	Up to 110 Mbps per Carrier Up to 330 Mbps per Base Unit - 3 x Carriers	
Throughput UL TDD Config 2-7	11 Mbps per Carrier 33 Mbps per Base Unit - 3 x Carriers	
Operating Mode	TD-LTE	
Power Consumption	150 W maximum	
Power	48 VDC	
Connectivity	Default: 1 x Copper 1000BaseT; Optional: 1 x SFP	
Synchronization	Integral GPS antenna (GPS, GLONASS, BeiDou) Optional: External GPS	



# FW-300i LAA

## SPECIFICATIONS



<b>Citizens Broadband Radio Service (CBRS)</b>	CBSD Category B Certified
<b>Embedded Evolved Packet Core (EPC)</b>	Software Option
<b>OPERATIONS, ADMINISTRATION AND MAINTENANCE (OAM)</b>	
<b>Configuration</b>	WebUI, CLI, TR-069 and EMS
<b>EMS Integration</b>	RESTCONF
<b>OAM Protocols</b>	RESTCONF, HTTPS, SSH, SNMPv2c and TR-069
<b>ANTENNA SPECIFICATIONS</b>	
<b>Gain</b>	17 dBi
<b>Azimuth Coverage (-5 dB)</b>	60°
<b>Azimuth Beamwidth (-3 dB)</b>	45°
<b>Elevation Beamwidth (-3 dB)</b>	10°
<b>Electrical Downtilt</b>	0°
<b>Azimuth Sidelobe</b>	< -25 dB (Typ.)
<b>Front-to-Back Ratio @180 Degrees</b>	> 30 dB (Typ.)
<b>Co-Polar Port-to-Port Isolation</b>	15 dB (Typ.)
<b>Cross-Polarization Port-to-Port Isolation</b>	> 20 dB (Typ.)
<b>Max. Voltage Standing Wave Ratio (VSWR)</b>	1.5:1
<b>Polarization</b>	Dual Pol 45°
<b>Lightning Protection</b>	DC Ground
<b>MECHANICAL</b>	
<b>Dimensions (L x W x D)</b>	13.78" x 22.4" x 8.9" (350 x 570 x 227 mm)
<b>Survival Wind Speed</b>	Up to 124 mph (200 km/hour)
<b>Weight</b>	26.5 lbs. (12.0 Kg)
<b>Operational Temperature</b>	-40 °F to 60 °F (-40 °C to 60 °C)
<b>Mechanical Uptilt/Downtilt</b>	0° - 10°

# YOUR NETWORK. OUR SOLUTIONS.



---

**CONTACT US**

Tel: +1.800.301.4962  
info@blinqnetworks.com  
www.blinqnetworks.com

140 Renfrew Drive, Markham  
ON, L3R 6B3, Canada  
© 2019-2023 BLiNQ Networks