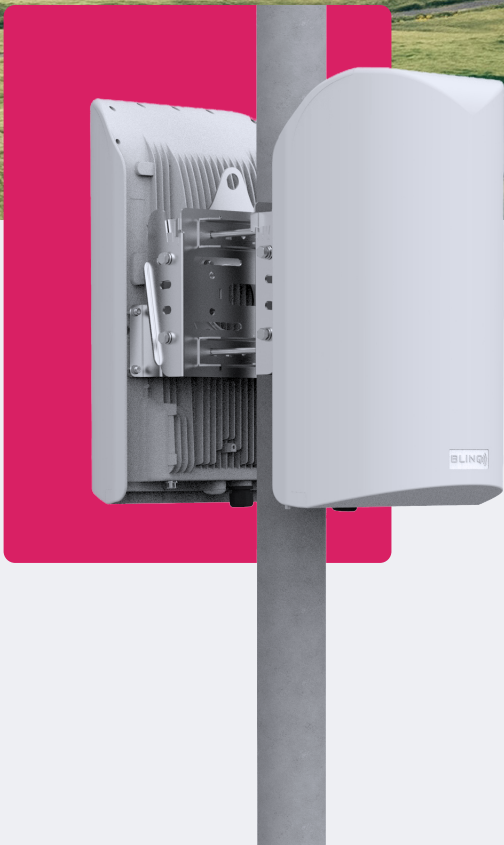




CONNECTING COMMUNITIES THROUGH WIRELESS SOLUTIONS



FW-300i

FW-300i LAA



DUAL BAND

FW-300i LAA



All-In-One Solution



Ease of Deployment



**CBRS Category B
Certified**



**Unique Dual Band
Design**

GREATER FLEXIBILITY; INCREASED CAPACITY

The BLiNQ Dual Band FW-300i LAA system is a one sector Long-Term Evolution (LTE) Evolved Node B (eNB) with the ability to operate in both Band 46 (UNII-1 and UNII-3) and Band 48 (Citizens Broadband Radio Service - CBRS).

Designed to provide carrier redundancy, this dual band wireless radio system has 3 CC capabilities when using one or both bands, providing greater flexibility to users looking for more spectrum in order to provide higher capacity.

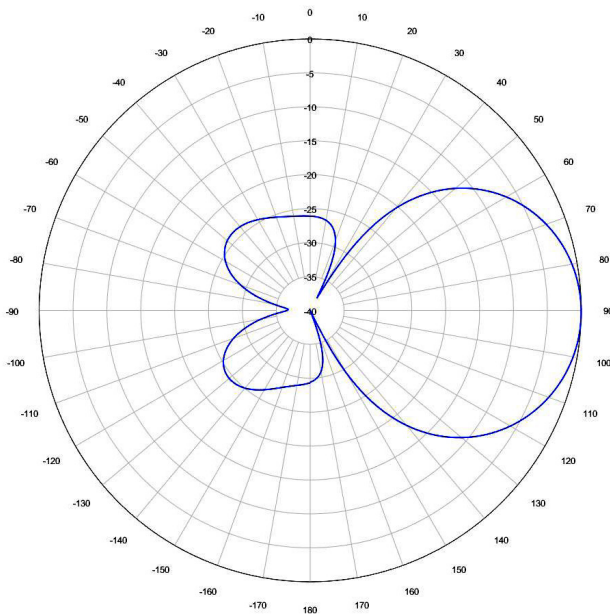
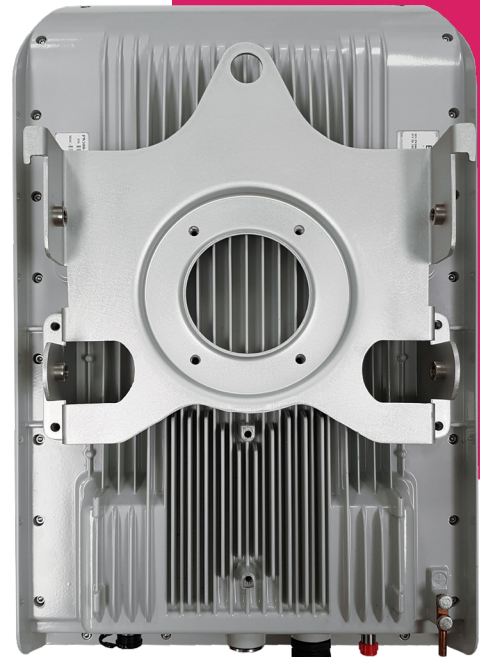
From the side of a building or a water tower, this simple solution fits easily, bringing LTE connectivity to anyone, anywhere.

FW-300i LAA

FEATURES

HERE ARE SOME KEY FEATURES:

- 'All-In-One' Fully Integrated Solution
- Features Self Channel Assignment
- Supports Downlink Carrier Aggregation (up to 3CC)
- CBRs Category B Certified
- Supports all LTE TDD Configurations
- 60° Azimuth Coverage
- Features Standard 2x2 MIMO Configurations
- Network Management: WebUI, CLI, TR-069 and EMS
- Supports Mobility
- Supports IPv6



FW-300i LAA

SPECIFICATIONS



MODEL	
FW3-B48-46-NA	
RADIO SPECIFICATION	
Frequency Band	3.55-3.70 GHz (LTE Band 48 - CBRS) 5.15-5.25 GHz (UNII-1) and 5.725-5.85 GHz (UNII-3)
Transmit Power (Max.)	B48: 33 dBm/Port*
	B46 (UNII-1 and UNII-3): 23 dBm/Port*
EIRP (Max.)	B48: 53 dBm/Sector*
	B46 (UNII-1 and UNII-3): 43 dBm/Sector*
Channel Bandwidth	10, 20 MHz
MIMO	2TX x 2RX per Sector
LTE Compliance	3GPP Release 10 (SW upgrade to Release 13)
PERFORMANCE & ATTRIBUTES	
Number of UEs Supported	Up to 96 UEs per Base Unit
Carrier Aggregation	Supports contiguous and non-contiguous 2CC, 3CC Covers full CBRS band (150 MHz)
Throughput DL TDD Config 2-7	Up to 110 Mbps per Carrier Up to 330 Mbps per Base Unit - 3 x Carriers
Throughput UL TDD Config 2-7	11 Mbps per Carrier 33 Mbps per Base Unit - 3 x Carriers
Operating Mode	TD-LTE
Power Consumption	150 W maximum
Power	48 VDC
Connectivity	Default: 1 x Copper 1000BaseT; Optional: 1 x SFP
Synchronization	Integral GPS antenna (GPS, GLONASS, BeiDou) Optional: External GPS
Citizens Broadband Radio Service (CBRS)	CBSD Category B Certified
Embedded Evolved Packet Core (EPC)	Software Option
OPERATIONS, ADMINISTRATION AND MAINTENANCE (OAM)	
Configuration	WebUI, CLI, TR-069 and EMS
EMS Integration	RESTCONF
OAM Protocols	RESTCONF, HTTPS, SSH, SNMPv2c and TR-069

*Please refer to FW-300i LAA User Guide for FCC Compliant values.

FW-300i LAA

SPECIFICATIONS



ANTENNA SPECIFICATIONS	
Gain	17 dBi
Azimuth Coverage (-5 dB)	60°
Azimuth Beamwidth (-3 dB)	45°
Elevation Beamwidth (-3 dB)	10°
Electrical Downtilt	0°
Azimuth Sidelobe	< -25 dB (Typ.)
Front-to-Back Ratio @180 Degrees	> 30 dB (Typ.)
Co-Polar Port-to-Port Isolation	15 dB (Typ.)
Cross-Polarization Port-to-Port Isolation	> 20 dB (Typ.)
Max. Voltage Standing Wave Ratio (VSWR)	1.5:1
Polarization	Dual Pol 45°
Lightning Protection	DC Ground
MECHANICAL	
Dimensions (L x W x D)	13.78" x 22.4" x 8.9" (350 x 570 x 227 mm)
Survival Wind Speed	Up to 124 mph (200 km/hour)
Weight	26.5 lbs. (12.0 Kg)
Operational Temperature	-40 °F to 60 °F (-40 °C to 60 °C)
Mechanical Uptilt/Downtilt	0° - 10°

YOUR NETWORK. OUR SOLUTIONS.



CONTACT US

Tel: +1.800.301.4962
info@blinqnetworks.com
www.blinqnetworks.com

140 Renfrew Drive, Markham
ON, L3R 6B3, Canada
© 2019-2023 BLiNQ Networks