



CONNECTING COMMUNITIES THROUGH
WIRELESS SOLUTIONS



FWC-133-3550

FWC-133-3550

SUMMARY



FWC-133-3550



CATEGORY 12/13 DUAL BAND OUTDOOR CPE

BLiNQ's FWC-133-3550 Outdoor CPE is a Category 12/13 Outdoor CPE that supports connectivity to dual band (3.5 GHz and 5 GHz) base stations. The FWC-133-3550 has a built-in high gain directional antenna, allowing to expand LTE signal coverage.

Featuring a password protected built-in web server, this high performing CPE can be configured with ease from anywhere in the world.



**CBSD Category
B Certified**



**256QAM
Downlink**



**IP65 Environmental
Proof**



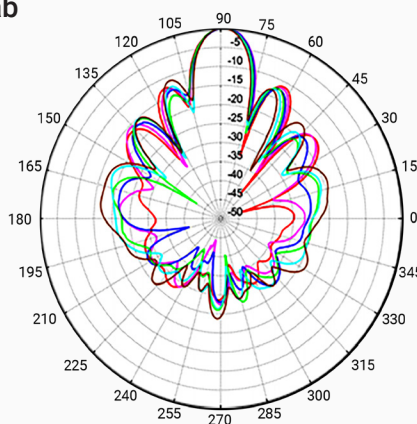
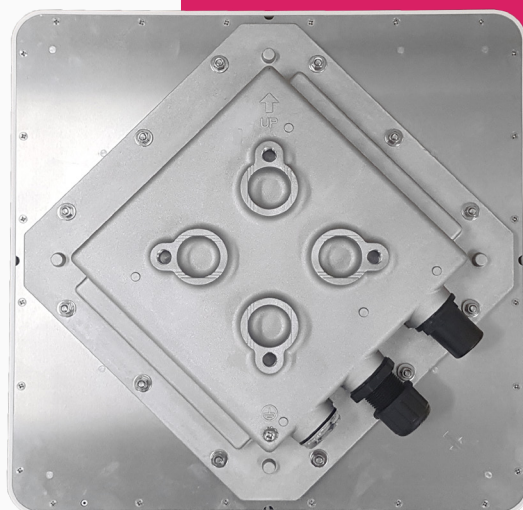
**Supports 1.8V
and 3V SIM/USIM**

FWC-133-3550

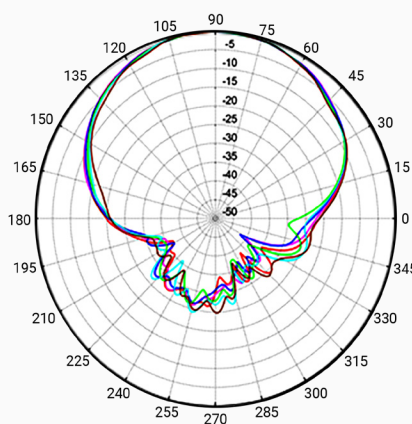
SUMMARY

HERE ARE SOME KEY FEATURES:

- Supports TDD-LTE Band 48, 42/43 & 46*
- 3GPP Release 12 Compliant
- Supports up to UE LTE Category 12/13/15 PHY Rate **
- Supports 4x4 MIMO with 40 MHz CA
- Supports DL 256QAM with DL 2x2 MIMO only
- Supports UL 2Tx (CDD / UL_CA/ UL_MIMO)
- Physical 2Tx & 4Rx in RF Front End
- Supports 1.8V/3V SIM and USIM Card for LTE Mode
- Supports Dynamic Host Configuration Protocol
- Built-in Web Server for Web-Based Configuration
- Password Protected Access and Configuration
- Supports IEEE 802.3, IEEE 802.3u, 802.3ab (10/100/1000 Mbps)
- Supports Power over Ethernet of Outdoor WAN port {802.3 af}
- Supports VPN Pass-Through
- IP65 Environmental Proof



Azimuth



Elevation

* B46 supports UNII-1 & 3

** TDD Cat 12/13 with 4x4 + 40MHz carrier aggregation peak throughput is around 440Mbps for Downlink @ TDD Config 2 SSF 7 & UL CA + 64QAM is around 30Mbps for Uplink

** TDD Cat 15 with 2x2 + 80MHz carrier aggregation + 256QAM peak throughput is 500 Mbps+ for Downlink @ TDD Config 2 SSF 7 & UL CA + 64QAM is around 30Mbps for Uplink

FWC-133-3550

SPECIFICATIONS



MECHANICAL, ENVIRONMENTAL & REGULATORY

	Dimension (L x W x H)	13.4" x 13.4" x 2.2" (340 mm x 340 mm x 55 mm)
	Weight	4.4 lbs (2 kg)
	PoE	802.3at
	Power	Input: Universal range 100~240V AC Output: 56 VDC
	Reset/Reboot Button	Tactile Switch (hidden for repair only)
	Operating Humidity	5% to 95%
	Storage Humidity	5% to 95%
	Operational Temperature	-40°F to 131°F (-40°C to 55°C)
	Storage Temperature	-40°F to 158°F (-40°C to 70°C)
	FCC	47 CFR FCC Part 96 / 47 CFR FCC Part 15.407
	Safety	47 CFR FCC Part 2.1091
	CBSD	Category B

NETWORKING & OAM

	LTE BB ASIC	GDM7243A (GCT Semiconductor)
	LTE RF ASIC	GRF7243A+ (GCT Semiconductor)
	Ethernet LAN Port	1 x RJ-45 Port 10/100/1000 Auto-Sensing, Auto-MDX
	LED Indicators	Signal Strength / LAN / SIM
	SIM Function	1.8V, 3V SIM and USIM card
	PIN/PUK Code	Yes (Ready with chipset)
	Stack	IPv4, IPv6, IPv4/v6 dual stack
	NAT/Dynamic NAT	Yes
	Router Mode	Yes
	Bridge Mode	Yes (Available per request)

FWC-133-3550

SPECIFICATIONS



	Tunnel Mode	GRE, L2TP, L2TP with IPsec, PPTP (Available per request)	
	DCHP Server in LAN	Yes (For NAT mode, support 253 clients max.)	
	DNS Relay	Yes (For NAT mode)	
	DDNS Client	Yes (For NAT mode)	
	VPN Pass-Through – IPSec/PPTP/L2TP	Yes (For NAT mode)	
	UPNP	Yes	
	HTTP(s) Server	Yes	
	ALG Support (FTP/SIP/...)	Yes	
	Networking Debug/Testing	IPerf, Ping, Traceroute	
RADIO SPECIFICATION			
	Frequency Band	TDD LTE Band 48, 42/43, 46	
	Peak DL Throughput	Cat 12/13 440 Mbps	Cat 15 500 Mbps
	Peak UL Throughput	30 Mbps (TDD Config 2-7 with 64 QAM)	
	Peak Gain	Band 46 16 dBi	Band 48 12 dBi
	Carrier Aggregation	2CC up to 20 MHz each	
	DL Carrier Aggregation Bandwidth	80 MHz max. (20 MHz + 20 MHz non-contiguous up to 40 MHz) (40 MHz (contiguous) + 40 MHz (contiguous) up to 80 MHz)	
	UL Carrier Aggregation Bandwidth	40 MHz max. with 2CC	
	Tx Power	Band 46 16 dBm	Band 48 25 dBm
	Tx Power Dynamic Range	63 dB	
	Receiver Sensitivity (@ 20 MHz)	-96 dBm	
	Channel Bandwidth/Carriers	5, 10, 15, 20 MHz	
	MIMO	DL MIMO 2x2 / 4x4 / 8x4 UL 1x2 (with diversity); UL 1x2 CA; UL 2x2	

FWC-133-3550

SPECIFICATIONS



	DL Carrier Aggregation Matrix	DL MIMO 2x2 – Intra, Contiguous & Non-Contiguous DL MIMO 4x4 – Intra Band Only
	DL Modulation	4x4 MIMO with 64 QAM Max. 2x2 MIMO with 256 QAM Max.
	UL Modulation	Max. 64 QAM
	LTE Compliance	3GPP Release 12
DEVICE MANAGEMENT & SECURITY		
	WEB	Yes
	SNMP	Ready for IoT
	TR-069	Ready for IoT
	TR-0143	Ready for IoT
	OMA-DM	N/A
	FOTA Upgrade	Yes
	System Log/Diagnostic	Yes (Chipset embedded tool)
	Username/Password Configuration	Yes
	L2/L3 Firewall	Basic Firewall/Port Forwarding/Port Trigger/DMZ/Remote WAN Ping/Remote Web Access Control
	Time Zone Configuration	Yes
	Dual Firmware	Yes (Switchable)
	Firmware Verification	Yes (Use digital signal to verify installed software)

YOUR NETWORK. OUR SOLUTIONS.



CONTACT US

Tel: +1 800.301.4962
info@blinqnetworks.com
www.blinqnetworks.com

140 Renfrew Drive, Markham
ON, L3R 6B3, Canada
© 2018-2023 BLiNQ Networks a CCI company