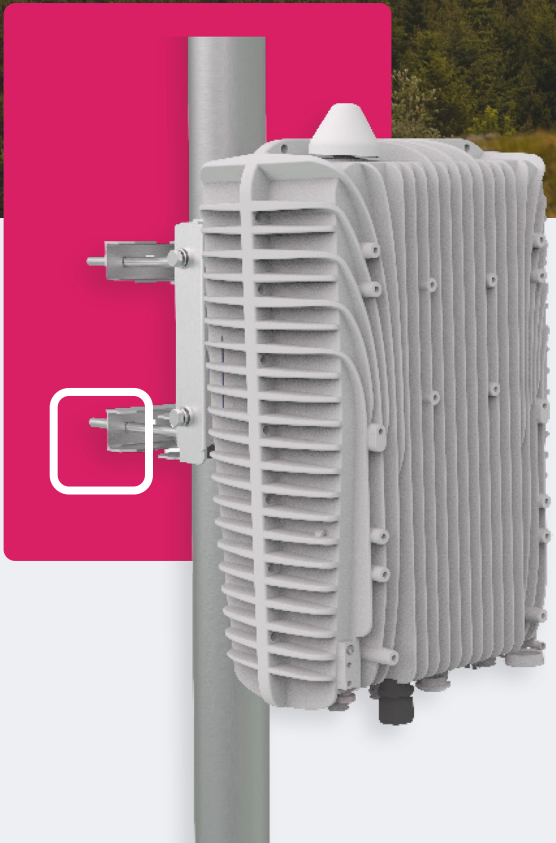


CONNECTING COMMUNITIES THROUGH
WIRELESS SOLUTIONS

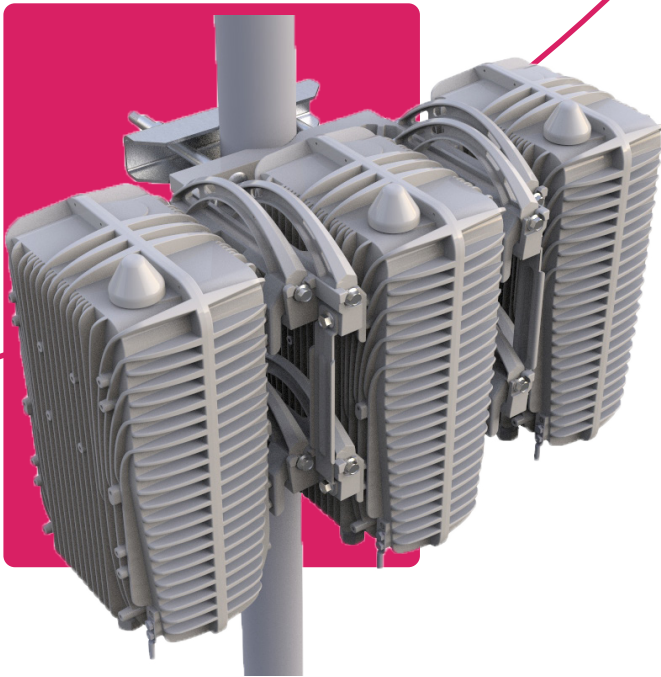


FW-600

B 4 1



FW-600



A POWERFUL NETWORK SOLUTION THAT PUSHES BOUNDARIES

The FW-600 is an ultra-high capacity, all integrated multicarrier LTE base station system. It is designed as a response to today's broadband connectivity needs in rural and dense suburban markets.

This powerful single band base station can easily match or out-perform most MIMO commercial solutions in the Band 41 spectrum. Paired with passive beamforming antenna systems, the FW-600 brings spectral efficiency and capacity to new horizons.

THE FW-600 B41 SINGLE BAND ARCHITECTURE FEATURES:

- 3 Carriers and up to 3 Beams
- Over the Air Downlink Carrier Aggregation (Up to 3CC)
- Mobility Support
- 10 MHz, 15 MHz and 20 MHz Channel Bandwidths



Peak Throughput:
370 Mbps per Base Unit



Supports Carrier Aggregation



High Capacity

FW-600 B41

SPECIFICATIONS



MODEL	
FW6-B41-00-WW	
RADIO SPECIFICATION	
Frequency Band	TDD LTE Bands 41
Max. Transmit Power	39 dBm/port (+ 3 dBm MIMO)
Channel Bandwidth	10 MHz / 15 MHz / 20 MHz
MIMO	6Tx x 6Rx (several possible MIMO configurations)
LTE Compliance	3GPP Release 10 (SW upgrade to Release 13)
PERFORMANCE & ATTRIBUTES	
Number of UEs Supported	Up to 288 UEs per Base Unit
Carrier Aggregation	Supports contiguous and non-contiguous 2CC, 3CC configurations
Throughput DL TDD Config 2-7	Up to 110 Mbps per Carrier Up to 330 Mbps per base unit - 3 x Carriers
Throughput UL TDD Config 2-7	11 Mbps per Carrier 33 Mbps per base unit - 3 x Carriers
Operating Mode	TD-LTE supports all standard frame configurations
Power Consumption	480 W
Power	48V DC
Connectivity	1 x Copper 1000BaseT 1 x SFP 6 x 2.2-5 RF Connectors
Synchronization	Integral GPS receiver (GPS, GLONASS, BeiDou)
Embedded EPC	Software Option
OAM	
Configuration	WebUI, CLI, TR-069 and EMS
EMS Integration	RESTCONF
OAM Protocols	RESTCONF, HTTPS, SSH, SNMPv2c and TR-069
MECHANICAL	
Dimensions (LxWxD) Base Unit	19.4" x 12" x 8.4" (492 mm x 304 mm x 160 mm)
Survival Wind Speed	Up to 125 mph (200 kph)
Weight	43.2 lbs (19.6 kg)
Operational Temperature	-40 °F to 140 °F (-40 °C to 60 °C)

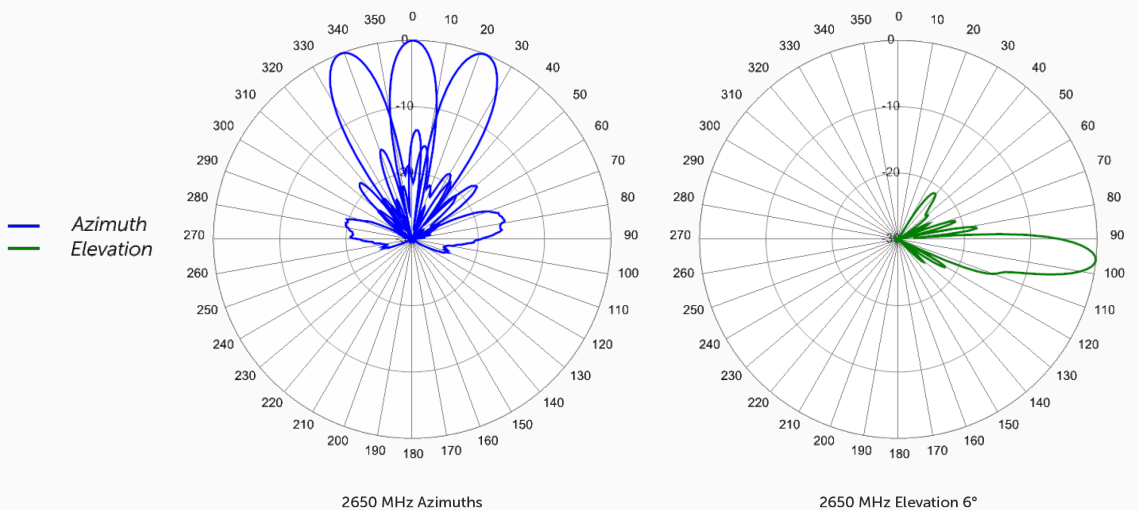
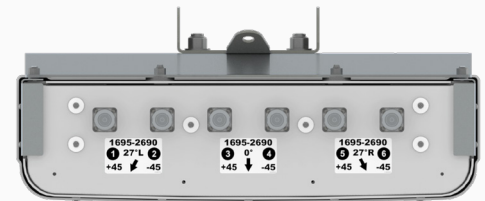
Here is one of the recommended antenna pairings and its deployment configuration.

FW6-MBA3F-E3AB:

THREE-BEAM SPECIAL EVENTS ANTENNA

This three foot (0.8m) tall, single band, six port multibeam array contains three independent LTE Optimized Beams covering 1695-2690 MHz frequencies.

LTE Optimized Beams improve LTE data throughput by minimizing beam crossover, providing an efficient use of valuable radio capacity and frequency spectrum.



FW-600 B41

ANTENNA SPECIFICATIONS



ELECTRICAL		
	Ports	6 x High Band Ports
	Frequency Range	2496-2690 MHz
	Gain	21.5 dBi
	Azimuth Beamwidth (-3dB)	12.8°
	Azimuth Beam Crossover	11.0 dB
	Elevation Beamwidth (-3dB)	9.7°
	Electrical Downtilt	6°
	Elevation Sidelobes (1st Upper)	< -16 dB
	Front-to-Back Ratio @180°	> 35 dB
	Cross-Polar Discrimination (at Peak)	> 19 dB
	Cross-Polar Port-to-Port Isolation	> 24 dB
	Interbeam Co-Pol Isolation (Adjacent Beams)	> 15 dB
	Interbeam Co-Pol Isolation (Non-Adjacent Beams) (Worse Case)	> 12 dB
	Voltage Standing Wave Ratio (VSWR)	< 1.5:1
	Passive Intermodulation (2x20W)	≤ -153 dBc
	Input Power Continuous Wave (CW)	200 watts
	Polarization	Dual Pol 45°
	Input Impedance	50 ohms
	Lightning Protection	DC Ground
MECHANICAL		
	Dimensions (LxWxD)	30.5" x 24.9" x 6.6" (776 mm x 633 mm x 167 mm)
	Survival Wind Speed	Up to 150 mph (240 km/hr)
	Front Wind load	162 lbs (722 N) @ 100 mph (161 kph)
	Side Wind Load	46 lbs (206 N) @ 100 mph (161 kph)
	Equivalent Flat Plate Area	6.3 ft ² (0.6 m ²)
	Weight*	41.6 lbs (18.9 kg)
	Connector	6 x 7-16 DIN female long neck or 4.3-10 female
	Mounting Pole	2" to 5" (5 cm to 12 cm)
* Weight excludes mounting		

YOUR NETWORK. OUR SOLUTIONS.



CONTACT US

Tel: +1 800.301.4962
info@blinqnetworks.com
www.blinqnetworks.com

140 Renfrew Drive, Markham
ON, L3R 6B3, Canada
© 2018-2023 BLiNQ Networks a CCI company