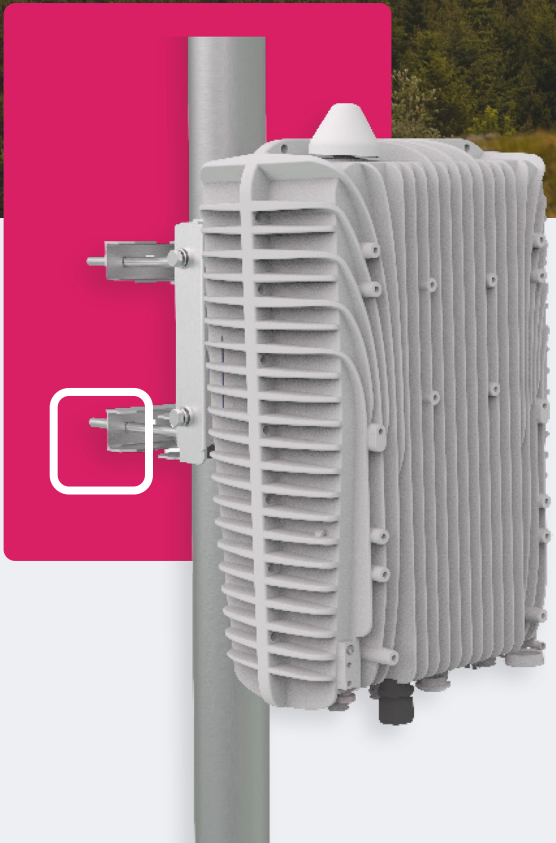


CONNECTING COMMUNITIES THROUGH  
**WIRELESS SOLUTIONS**

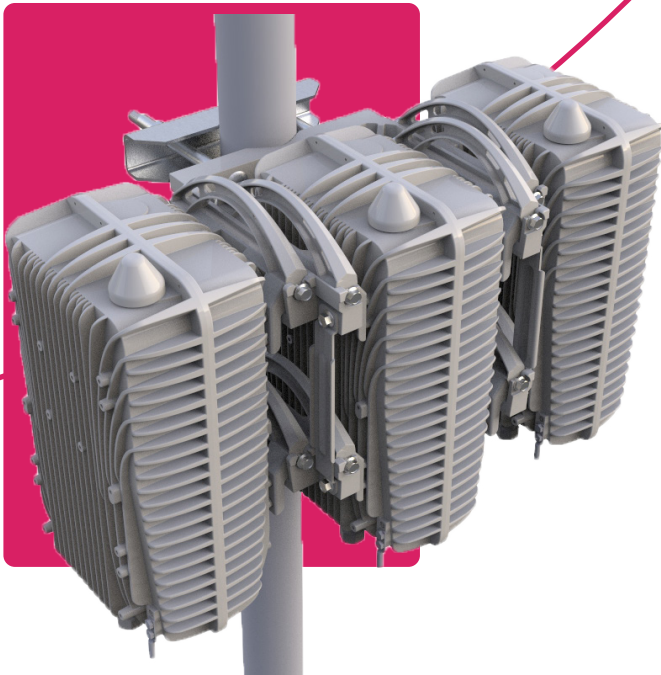


FW-600

B 4 2 / 4 3 , B 4 8



# FW-600



## A POWERFUL NETWORK SOLUTION THAT PUSHES BOUNDARIES

The FW-600 is an ultra-high capacity, all integrated multicarrier LTE base station system. It is designed as a response to today's broadband connectivity needs in rural and dense suburban markets.

This powerful single band base station can easily match or out-perform most MIMO commercial solutions in the Band 48 or Band 42/43 spectrum. Paired with passive beamforming antenna systems, the FW-600 brings spectral efficiency and capacity to new horizons.

### THE FW-600 B42/43, B48 SINGLE BAND ARCHITECTURE FEATURES:

- 3 Carriers and up to 3 Beams
- Peak Throughput: 450 Mbps per Base Unit
- Supports Downlink Carrier Aggregation (Up to 3CC)
- Mobility Support
- 10 MHz and 20 MHz Channel Bandwidths



**CBRS Category B Certified (FW6-B48-00-NA)**



**Supports Carrier Aggregation**



**High Capacity**

# FW-600 B42/43, B48

## SPECIFICATIONS



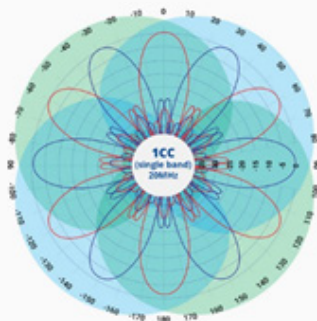
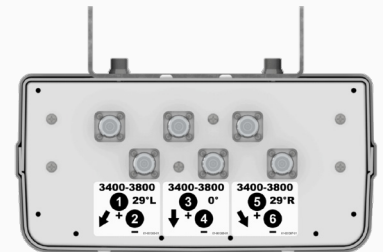
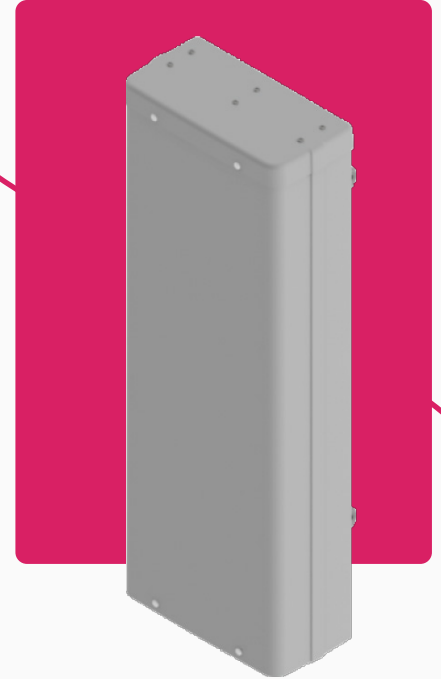
MODELS		
FW6-B42-43-EU / FW6-B48-00-NA		
	FW6-B48-00-NA	FW6-B42-43-EU
RADIO SPECIFICATION		
Frequency Band	3.55-3.70 GHz (LTE Band 48 - CBRS)	3.40-3.80 GHz (LTE Band 42/43)
Max. Transmit Power	33 dBm/port (+ 3 dBm MIMO)	36 dBm/port (+ 3 dBm MIMO)
Channel Bandwidth	10, 20 MHz	
MIMO	6Tx x 6Rx (several possible MIMO configurations)	
LTE Compliance	3GPP Release 10 (SW upgrade to Release 13)	
PERFORMANCE & ATTRIBUTES		
Number of UEs Supported	Up to 288 UEs per base unit	
Carrier Aggregation	Supports contiguous and non-contiguous 2CC, 3CC configuration	
Throughput DL TDD Config 2-7	Up to 110 Mbps per Carrier Up to 330 Mbps per Base Unit - 3 x Carriers	
Throughput UL TDD Config 2-7	11 Mbps per Carrier 33 Mbps per base unit - 3 x Carriers	
Operating Mode	TD-LTE supports all standard frame configurations	
Power Consumption	180 W	480 W
Power	48V DC	
Connectivity	1 x Copper 1000BaseT 1 x SFP 6 x 2.2-5 RF Connectors	
Synchronization	Integral GPS receiver (GPS, GLONASS, BeiDou)	
Embedded EPC	Software Option	
OAM		
Configuration	WebUI, CLI, TR-069 and EMS	
EMS Integration	RESTCONF	
OAM Protocols	RESTCONF, HTTPS, SSH, SNMPv2c and TR-069	
MECHANICAL		
Dimensions (LxWxD) Base Unit	19.4" x 12" x 8.4" (492 mm x 304 mm x 160 mm)	
Survival Wind Speed	Up to 125 mph (200 kph)	
Weight	43.2 lbs (19.6 kg)	
Operational Temperature	-40 °F to 140 °F (-40 °C to 60 °C)	

Here is one of the recommended antenna pairings and its deployment configuration.

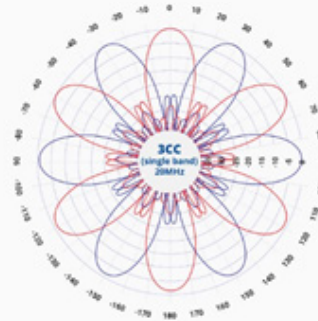
# FW6-MBA3F-H3AA:

## THREE-BEAM SPECIAL EVENTS ANTENNA

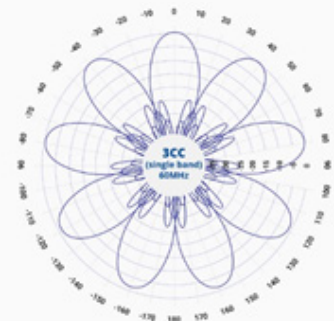
This CCI Multibeam Antenna contains Three Independent LTE Optimized Beams with 2x2 MIMO capability. It enables maximum spectrum re-use by sectorization, greatly increasing network capacity.



**1CC = 20 MHz (f1)**  
**1CC = 20 MHz (f1)**



**2CC = 40 MHz (f1, f2)**  
**1CC = 20 MHz (f3)**



**3CC = 60 MHz (f1, f2, f3)**



# FW-600 B42/43, B48

## ANTENNA SPECIFICATIONS



ELECTRICAL		
	<b>Ports</b>	6 x High Band Ports
	<b>Frequency Range</b>	3400-3800 MHz
	<b>Gain*</b>	22.3 dBi
	<b>Azimuth Beamwidth (-3dB)</b>	17.6°
	<b>Azimuth Beam Crossover</b>	11.1 dB
	<b>Elevation Beamwidth (-3dB)</b>	5.4°
	<b>Electrical Downtilt</b>	4°
	<b>Elevation Sidelobes (1st Upper)</b>	< -22 dB
	<b>Front-to-Back Ratio @180°</b>	> 35 dB
	<b>Cross-Polar Discrimination (at Peak)</b>	> 18 dB
	<b>Cross-Polar Port-to-Port Isolation</b>	> 25 dB
	<b>Interbeam Co-Pol Isolation (Adjacent Beams)</b>	> 25 dB
	<b>Interbeam Co-Pol Isolation (Non-Adjacent Beams) (Worst Case)</b>	> 15 dB
	<b>Voltage Standing Wave Ratio (VSWR)</b>	< 1.5:1
	<b>Passive Intermodulation (2x20W)</b>	≤ -140 dBc
	<b>Input Power Continuous Wave (CW)</b>	200 watts
	<b>Polarization</b>	Dual Pol 45°
	<b>Input Impedance</b>	50 ohms
	<b>Lightning Protection</b>	DC Ground
*Electrical specifications follow document "Recommendation on Base Station Antenna Standards" (BASTA) V9.6.		
MECHANICAL		
	<b>Dimensions (LxWxD)</b>	35.6" x 12.9" x 6.3" (904 mm x 328 mm x 160 mm)
	<b>Survival Wind Speed</b>	Up to 150 mph (240 km/hr)
	<b>Front Wind load</b>	99 lbs (440 N) @ 100 mph (161 kph)
	<b>Side Wind Load</b>	53 lbs (237 N) @ 100 mph (161 kph)
	<b>Equivalent Flat Plate Area</b>	3.9 ft² (0.4 m²)
	<b>Weight**</b>	22.5 lbs (10.2 kg)
	<b>Connector</b>	6 x 4.3-10 female
	<b>Mounting Pole</b>	2" to 5" (5 cm to 12 cm)
** Weight excludes mounting		

# YOUR NETWORK. OUR SOLUTIONS.



---

**CONTACT US**

Tel: +1 800.301.4962  
info@blinqnetworks.com  
www.blinqnetworks.com

140 Renfrew Drive, Markham  
ON, L3R 6B3, Canada  
© 2018-2023 BLiNQ Networks a CCI company