



CONNECTING COMMUNITIES THROUGH
WIRELESS SOLUTIONS



FWC-122HG-35



FWC-122HG-35

SUMMARY



FWC-122HG-35



CATEGORY 12 SINGLE MODE OUTDOOR CPE

BLiNQ's FWC-122HG-35 is a Category 12 outdoor LTE CPE that supports 40 MHz carrier aggregation. Its internal high gain antenna promises to maximize reach and capacity.

Featuring a password protected built-in web server, this high performing CPE can be configured with ease from anywhere in the world.



**256QAM
Downlink**



**2x2 MIMO with
80 MHz CA Max.**



**802.3at POE
Powered**



**Supports 1.8V
and 3V SIM/USIM**

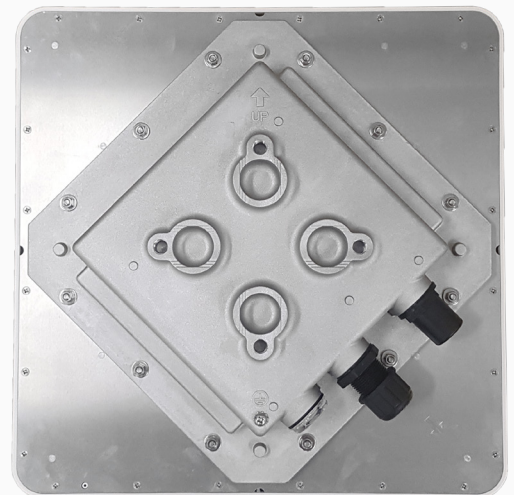
FWC-122HG-35

SUMMARY



HERE ARE SOME KEY FEATURES:

- Supports TDD-LTE Band 48, 42/43
- 3GPP Release 12 Compliant
- Supports up to UE LTE Category 12/13/15 PHY Rate *
- Supports 4x4 MIMO with 40 MHz CA Max.
- Supports DL 256QAM with DL 2x2 MIMO only up to 80 MHz CA
- Supports UL 2Tx (CDD / UL_CA/ UL_MIMO)
- Physical 2Tx & 4Rx in RF Front End
- Supports 1.8V/3V SIM and USIM Card for LTE Mode
- Supports Dynamic Host Configuration Protocol
- Built-in Web Server for Web-Based Configuration
- Password Protected Access and Configuration
- Supports IEEE 802.3, IEEE 802.3u, 802.3ab (10/100/1000 Mbps)
- 802.3at POE standard
- Supports NAT/Tunnel/Bridge/Router Mode
- Supports VPN Pass-Through
- IP67 Environmental Rating



* TDD Cat 12 with 4x4 + 40 MHz carrier aggregation peak throughput is around 440 Mbps for downlink @ TDD Config 2 SSF 7 and UL CA + 64QAM is around 30 Mbps.

FWC-122HG-35

SPECIFICATIONS



MECHANICAL, ENVIRONMENTAL & REGULATORY		
	Dimension (L x W x H)	13.4" x 13.4" x 2.95" (340 mm x 340 mm x 75 mm)
	Weight	4.41 lbs (2 kg)
	PoE	802.3at
	Power	Input: Universal range 100~240V AC Output: 56 VDC
	Reset/Reboot Button	Tactile Switch (inside box)
	Operating Humidity	5% to 95%
	Storage Humidity	5% to 95%
	Operational Temperature	-40°F to 131°F (-40°C to 55°C)
	Storage Temperature	-40°F to 158°F (-40°C to 70°C)
	FCC	FCC Part 96 Certified
	LTE	EN 301 908-13 V11.1.1
	Safety	IEC 60950-22:2016, IEC 62368-1:2014 compliant
	EMC	EN 301 489-1 / -4 / -17 / -24
	Environmental	IP67
	CBRS	CBSD Cat. B
NETWORKING & OAM		
	LTE BB ASIC	GDM7243A (GCT Semiconductor)
	LTE RF ASIC	GRF7243A (GCT Semiconductor)
	Ethernet LAN Port	1 x RJ-45 Port 10/100/1000 Auto-Sensing, Auto-MDX
	LED Indicators	Signal Strength / LAN / SIM
	SIM Function	1.8V, 3V SIM and USIM card
	PIN/PUK Code	Yes (Ready with chipset)
	Stack	IPv4, IPv6, Dual

FWC-122HG-35

SPECIFICATIONS



	NAT/Dynamic NAT	Yes
	Router Mode	Yes
	Bridge Mode	Yes
	Tunnel Mode	GRE and L2TP
	DCHP Server in LAN	Yes (For NAT mode, support 253 clients max.)
	DNS Relay	Yes (For NAT mode)
	DDNS Client	Yes (For NAT mode)
	VPN Pass-Through – IPSec/PPTP/L2TP	Yes (For NAT mode)
	UPNP	Yes
	HTTP(s) Server	Yes
	ALG Support (FTP/SIP/...)	Yes
	Networking Debug/Testing	IPerf, Ping, Traceroute
RADIO SPECIFICATION		
	Peak DL Throughput	440 Mbps (4x4 + 40 MHz CA, TDD Config 2-7)
	Peak UL Throughput	30 Mbps (TDD Config 2-7 with 64 QAM)
	Carrier Aggregation	2CC up to 20 MHz each
	Frequency Band	TDD LTE Band 48, 42/43
	DL Carrier Aggregation Bandwidth	80 MHz max.
	UL Carrier Aggregation Bandwidth	40 MHz max. with 2CC
	UL 2Tx Diversity	23 dBm
	UL 2Tx CA	23 dBm
	UL 2Tx MIMO	23 dBm
	Tx Power Dynamic Range	63 dB
	Receiver Sensitivity (@ 20 MHz)	-95 dBm
	Channel Bandwidth	10, 20 MHz

FWC-122HG-35

SPECIFICATIONS



	DL Carrier Aggregation Matrix	DL MIMO 2x2 – Intra, Contiguous & Non-Contiguous DL MIMO 4x4 – Intra Band Only
	DL Modulation	4x4 MIMO with 64 QAM Max. 2x2 MIMO with 256 QAM Max.
	UL Modulation	Max. 64 QAM
	LTE Compliance	3GPP Release 12
	Antenna Peak Gain	15 dBi
DEVICE MANAGEMENT & SECURITY		
	WEB	Yes
	SNMP	Ready for IoT
	TR-069	Ready for IoT
	FOTA Upgrade	Yes
	System Log/Diagnostic	Yes (Chipset embedded tool)
	Username/Password Configuration	Yes
	L2/L3 Firewall	Basic Firewall/Port Forwarding/Port Trigger/DMZ/Remote WAN Ping/Remote Web Access Control
	Time Zone Configuration	Yes
	Dual Firmware	Yes (Switchable)
	Firmware Verification	Yes (Use digital signal to verify installed software)

YOUR NETWORK. OUR SOLUTIONS.



CONTACT US

Tel: +1 800.301.4962
info@blinqnetworks.com
www.blinqnetworks.com

140 Renfrew Drive, Markham
ON, L3R 6B3, Canada
© 2018-2023 BLiNQ Networks a CCI company