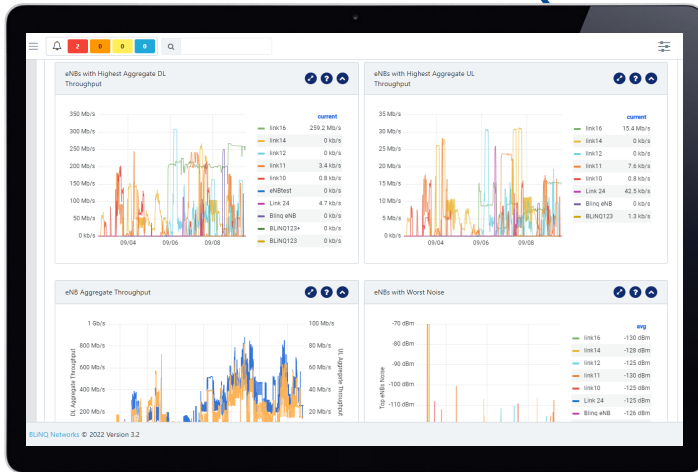




NETLINQ EMS



EMS OVERVIEW



The screenshot displays an "Active Alarms" table with the following columns: Alarm Time, Severity, Alarm ID, Device ID, Device System Name, Module ID, Component, Type, Probable Cause, and Alarm Comment.

Alarm Time	Severity	Alarm ID	Device ID	Device System Name	Module ID	Component	Type	Probable Cause	Alarm Comment
2023-03-23T15:08:19	major	11002	10.100.0.18	eNB18	0ca138-0004-58	CSB0-0	operational-status	operating-mode	csb0M_CPI preloaded sig invalid
2023-03-23T15:08:19	major	11002	10.100.0.18	eNB18	0ca138-0004-58	CSB0-2	operational-status	operating-mode	csb0M_CPI preloaded sig invalid
2023-03-23T15:08:19	major	11002	10.100.0.18	eNB18	0ca138-0004-58	CSB0-1	operational-status	operating-mode	csb0M_CPI preloaded sig invalid
1989-12-31T19:01:18	critical	5004	10.100.0.13	eNB13	0ca138-0004-04	RF-0	operational-status	configuration-change	Invalid carrier overlay
1989-12-31T19:01:18	critical	5004	10.100.0.13	eNB13	0ca138-0004-04	RF-2	operational-status	configuration-change	Invalid carrier overlay
1989-12-31T19:01:18	critical	5004	10.100.0.13	eNB13	0ca138-0004-04	RF-1	operational-status	configuration-change	Invalid carrier overlay
1989-12-31T19:01:18	critical	5009	10.100.0.45	Link17	0ca138-0004-58	RF-0	equipment	equipment-malfunction	Calibration error during rad
1989-12-31T19:01:04	critical	12001	10.100.0.45	Link17	0ca138-0004-58	CELL-0	operational-status	operating-mode	Sector 0 S1 State disabled
1989-12-31T19:01:04	critical	12001	10.100.0.45	Link17	0ca138-0004-58	CELL-1	operational-status	operating-mode	Sector 1 S1 State disabled
1989-12-31T19:01:04	critical	12001	10.100.0.45	Link17	0ca138-0004-58	CELL-2	operational-status	operating-mode	Sector 2 S1 State disabled

DESIGNED WITH THE FUTURE IN MIND.

NetLiNQ EMS is a component of BLiNQ Networks' NetLiNQ suite of products. It uses a Kubernetes-based architecture that runs on either a virtualized or cloud environment.

Based on proven and scalable open source software, the NetLiNQ EMS enables the service provider to provision, deploy, and manage BLiNQ fixed wireless access devices easily and rapidly.



ALL YOUR DEVICES, ALL YOUR DATA, ONE DASHBOARD.



Centralized Dashboard



Bulk Operations



Data Management



Performance Graphs



Alarms Management



Inventory Exports

- **Centralized Dashboard** to track your network health in real time.
- **Bulk Operations** support for simultaneous configurations or software upgrades.
- **Intuitive WebUI** that is easy to navigate and Contextual Help on every page that will provide guidance if needed
- Fast, Flexible **Data Management** that facilitates network health evaluation.
- **Backup & Restore** data in the event of a crash.
- Real-Time **Performance Graphs** enable prompt response in managing devices based on the needs of the network.
- Dynamic **Network Discovery** that allows for newly deployed eNBs to be added automatically.
- **Alarms Management** maintains alarms/events by level of severity and features customizable alarms based on KPIs.
- **Inventory Exports by Type** (eNBs or CPEs) as .csv files

YOUR NETWORK. OUR SOLUTIONS.



CONTACT US

Tel: +1 800.301.4962
info@blinqnetworks.com
www.blinqnetworks.com

140 Renfrew Drive, Markham
ON, L3R 6B3, Canada
© 2018-2023 BLiNQ Networks a CCI company