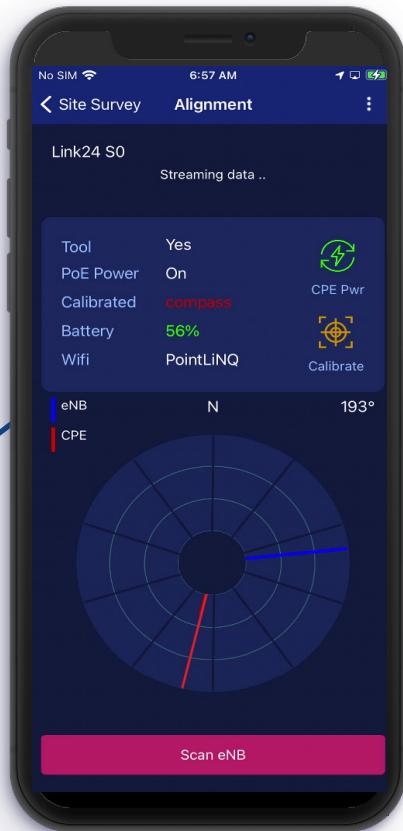


CONNECTING COMMUNITIES THROUGH  
WIRELESS SOLUTIONS



# OPTIMAL POINTING AND PERFORMANCE

PointLiNQ is an automated solution toolset which reduces hardware installation time, accurately aligning CPE to eNB, and predicts performance in various environments. This easy-to-use tool attains a high accuracy of alignment without the need for experienced installers.

## How does it work?

The PointLiNQ Installation Suite is composed of a PointLiNQ Portal, PointLiNQ Tool, and associated App (available in Android and iOS) designed to guide you through all pre-installation and installation steps.

Using Machine Learning (ML) algorithms and statistic channel models, the App's predictions will help select the best installation location and best serving eNB with greater accuracy, to provide the highest possible link throughput.



**Survey Prior  
to Installation**



**Iperf Speed Test**  
from selected eNB



**Configurable  
eNB List**



**CBSD Single Step  
Registration**

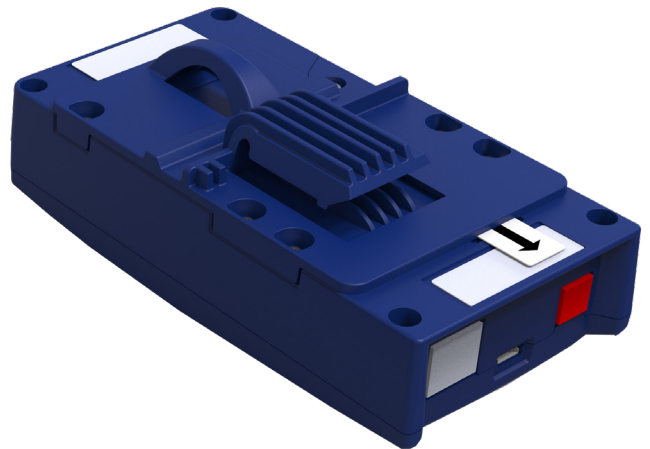


**RSRP Estimates  
of eNBs in Vicinity**



## THE KEY FEATURES AND BENEFITS OF POINTLINQ INCLUDE:

- **Highly accurate CPE link alignment**
- **Performs Survey Prior to Installation**
- **Generates List of Available ENBs from Portal**
- **Performance Predictions**  
The app computes performance predictions for different azimuth/elevation positions to determine ideal CPE alignment.
- **Real Time Connection Statistics**  
Scans and collects KPI values.
- **CPE CBSD Registration**  
Performs single step CBSD registration right from the app.
- **Iperf Speed Test**  
Provides UL and DL throughput values at the end of alignment process.
- **Generates Final Report**  
Reports are stored in the Portal and can be used for seasonal predictions.





BATTERY	
<b>Model</b>	Panasonic – NCR18650GA LI-ION (recommended)
<b>Quantity</b>	2
<b>Nominal Voltage</b>	2 x 3.6 V
<b>Charging Time</b>	4.5 Hours
<b>Charging Current</b>	1.45 A
<b>Operational Duration</b>	2 hours
WIRELESS CONNECTIVITY	
<b>Communications</b>	1T1R Wi-Fi 802.11 b/g/n (2.4G)
<b>Security/Encryption</b>	AES128/256-CBC
<b>Authentication</b>	WEP64/128, AES, WPA, WPA2, WAPI
OUTPUT	
<b>Connectors</b>	10/100BASE-T Ethernet with 802.3AF POE PSE (15.4 W)
<b>Console</b>	USB Virtual Serial Ports (VCP)
COVERAGE*	
<b>Azimuth</b>	28° + CPE Azimuth Antenna BW**
<b>Elevation</b>	25° + CPE Elevation Antenna BW**
MECHANICAL & ENVIRONMENTAL	
<b>Dimensions (L x W x D)</b>	5.9" x 3.07" x 2.16" (15 cm x 7.8 cm x 5.5 cm)
<b>Weight</b>	0.66 lbs (300 g)
<b>Operational Temperature</b>	-4 °F to 140 °F (-20 °C to 60 °C)
<b>Charging Temperature</b>	50 °F to 113 °F (10 °C to 45 °C)
<b>Storage Temperature</b>	-4 °F to 140 °F (-20 °C to 60 °C)

\* Since the PointLiNQ Tool works in conjunction with the CPE and the PointLiNQ App, its azimuth and elevation specifications will be tied to the CPE Bracket which has:

- Azimuth – 5 fix positions; 7° granularity
- Elevation – 6 fix positions; 5° granularity

\*\*Refer to BLiNQ CPE Specifications for CPE Antenna BW.

An aerial photograph of a large, calm lake surrounded by dense green forests and rolling hills. A road curves along the shoreline of the lake, and a multi-lane highway runs parallel to the forested area on the right side of the image. The sky is blue with scattered white clouds.

# YOUR NETWORK. OUR SOLUTIONS.

---

**CONTACT US**

Tel: +1 800.301.4962  
[info@blinqnetworks.com](mailto:info@blinqnetworks.com)  
[www.blinqnetworks.com](http://www.blinqnetworks.com)

140 Renfrew Drive, Markham  
ON, L3R 6B3, Canada  
© 2018-2023 BLiNQ Networks a CCI company