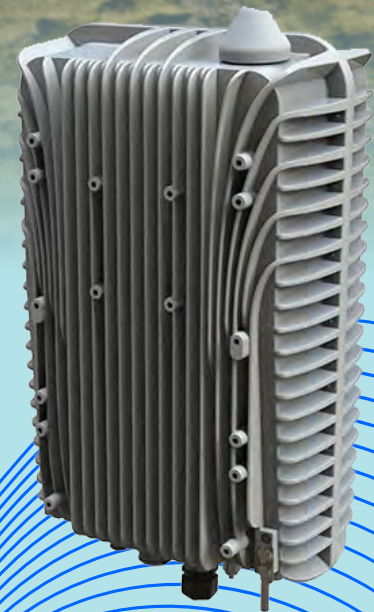




FW-600

B42/43, B48

The Solution that
Revolutionizes
Connectivity



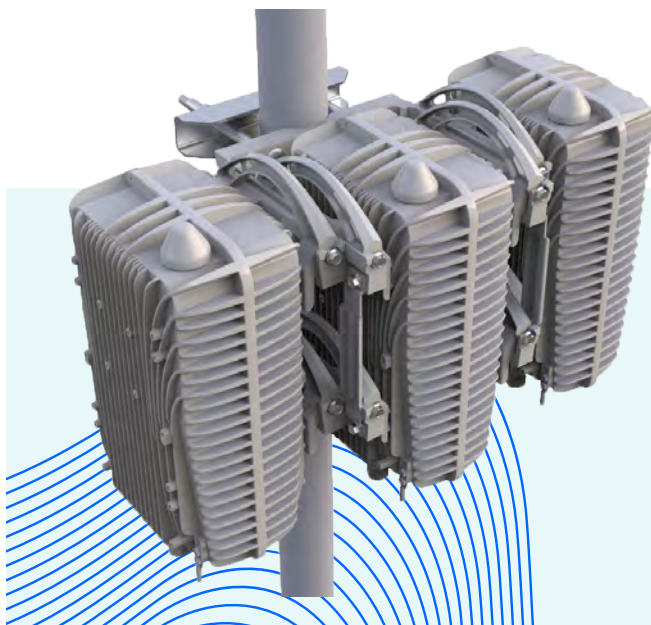
A Powerful Network Solution that Pushes Boundaries

The FW-600 is an ultra-high capacity, all integrated multicarrier LTE base station system. It is designed as a response to today's broadband connectivity needs in rural and dense suburban markets.

This powerful single band base station can easily match or out-perform most MIMO commercial solutions in the Band 48 or Band 42/43 spectrum. Paired with passive beamforming antenna systems, the FW-600 brings spectral efficiency and capacity to new horizons.

The FW-600 B42/43, B48 Single Band Architecture features:

- 3 Carriers and up to 3 Beams
- Peak Throughput: 450 Mbps per Base Unit
- Supports Downlink Carrier Aggregation (Up to 3CC)
- Mobility Support
- 10 MHz and 20 MHz Channel Bandwidths



Supports Carrier Aggregation



CBRS Category B Certified
(FW6-B48-00-NA)



High Capacity

FW-600 B42/43, B48

Specifications

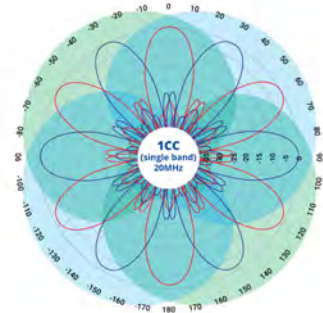
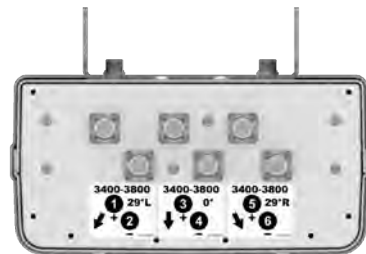
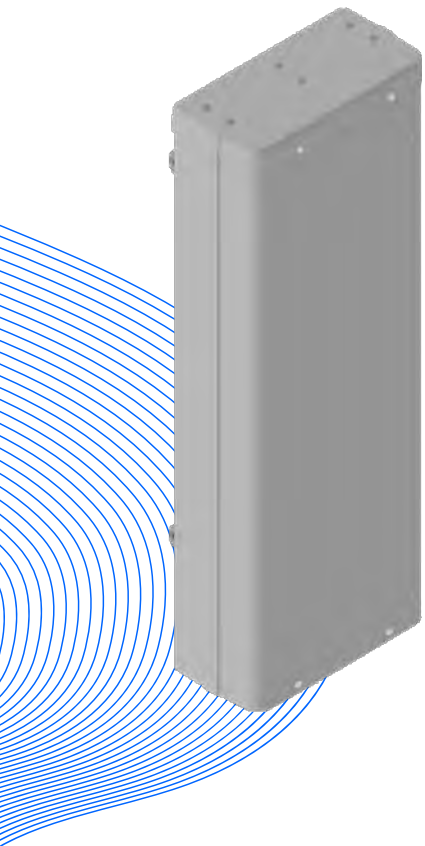


MODELS	FW6-B48-00-NA	FW6-B42-43-EU
RADIO SPECIFICATION		
Frequency Band	3.55–3.70 GHz (LTE Band 48 - CBRS)	3.40–3.80 GHz (LTE Band 42/43)
Max. Transmit Power	33 dBm/port (+ 3 dBm MIMO)	36 dBm/port (+ 3 dBm MIMO)
Channel Bandwidth	10, 20 MHz	
MIMO	6Tx x 6Rx (several possible MIMO configurations)	
LTE Compliance	3GPP Release 10 (SW upgrade to Release 13)	
PERFORMANCE & ATTRIBUTES		
Number of UEs Supported	Up to 288 UEs per base unit	
Carrier Aggregation	Supports contiguous and non-contiguous 2CC, 3CC configuration	
Throughput DL TDD Config 2–7	Up to 110 Mbps per Carrier Up to 330 Mbps per Base Unit - 3 x Carriers	
Throughput UL TDD Config 2–7	11 Mbps per Carrier 33 Mbps per base unit - 3 x Carriers	
Operating Mode	TD-LTE supports all standard frame configurations	
Power Consumption	180 W	480 W
Power	48V DC	
Connectivity	1 x Copper 1000BaseT 1 x SFP 6 x 2.2–5 RF Connectors	
Synchronization	Integral GPS receiver (GPS, GLONASS, BeiDou)	
Embedded EPC	Software Option	
OAM		
Configuration	WebUI, CLI, TR-069 and EMS	
EMS Integration	RESTCONF	
OAM Protocols	RESTCONF, HTTPS, SSH, SNMPv2c and TR-069	
MECHANICAL		
Dimensions (LxWxD) Base Unit	19.4" x 12" x 8.4" (492 mm x 304 mm x 160 mm)	
Survival Wind Speed	Up to 125 mph (200 kph)	
Weight	43.2 lbs (19.6 kg)	
Operational Temperature	-40 °F to 140 °F (-40 °C to 60 °C)	

FW6-MBA3F-H3AA

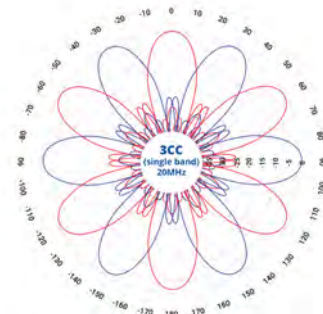
Three-Beam Special Events Antenna

This CCI Multibeam Antenna contains Three Independent LTE Optimized Beams with 2x2 MIMO capability. It enables maximum spectrum re-use by sectorization, greatly increasing network capacity.



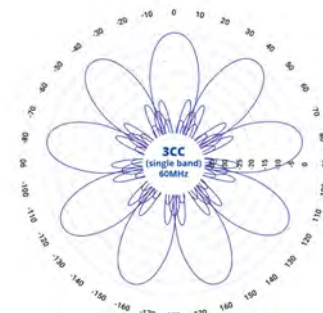
1CC = 20 MHz (f1)

1CC = 20 MHz (f1)



2CC = 40 MHz (f1, f2)

1CC = 20 MHz (f3)



3CC = 60 MHz (f1, f2, f3)

FW-600 B42/43, B48

Specifications



ELECTRICAL	
Ports	6 x High Band Ports
Frequency Range	3400–3800 MHz
Gain*	22.3 dBi
Azimuth Beamwidth (-3dB)	17.6°
Azimuth Beam Crossover	11.1 dB
Elevation Beamwidth (-3dB)	5.4°
Electrical Downtilt	4°
Elevation Sidelobes (1st Upper)	< -22 dB
Front-to-Back Ratio @180°	> 35 dB
Cross-Polar Discrimination (at Peak)	> 18 dB
Cross-Polar Port-to-Port Isolation	> 25 dB
Interbeam Co-Pol Isolation (Adjacent Beams)	> 25 dB
Interbeam Co-Pol Isolation (Non-Adjacent Beams) (Worst Case)	> 15 dB
Voltage Standing Wave Ratio (VSWR)	< 1.5:1
Passive Intermodulation (2x20W)	≤ -140 dBc
Input Power Continuous Wave (CW)	200 watts
Polarization	Dual Pol 45°
Input Impedance	50 ohms
Lightning Protection	DC Ground
*Electrical specifications follow document "Recommendation on Base Station Antenna Standards" (BASTA) V9.6.	
MECHANICAL	
Dimensions (LxWxD)	35.6" x 12.9" x 6.3" (904 mm x 328 mm x 160 mm)
Survival Wind Speed	Up to 150 mph (240 km/hr)
Front Wind load	99 lbs (440 N) @ 100 mph (161 kph)
Side Wind Load	53 lbs (237 N) @ 100 mph (161 kph)
Equivalent Flat Plate Area	3.9 ft ² (0.4 m ²)
Weight**	22.5 lbs (10.2 kg)
Connector	6 x 4.3–10 female
Mounting Pole	2" to 5" (5 cm to 12 cm)
**Weight excludes mounting	



Contact Us

Tel: +1-800-301-4962
info@blinqnetworks.com
www.blinqnetworks.com

140 Renfrew Drive, Markham
ON, L3R 6B3, Canada
© 2024 BLiNQ Networks