



X-300i

Coverage Where
It's Needed



The Most Cost Efficient LTE Coverage

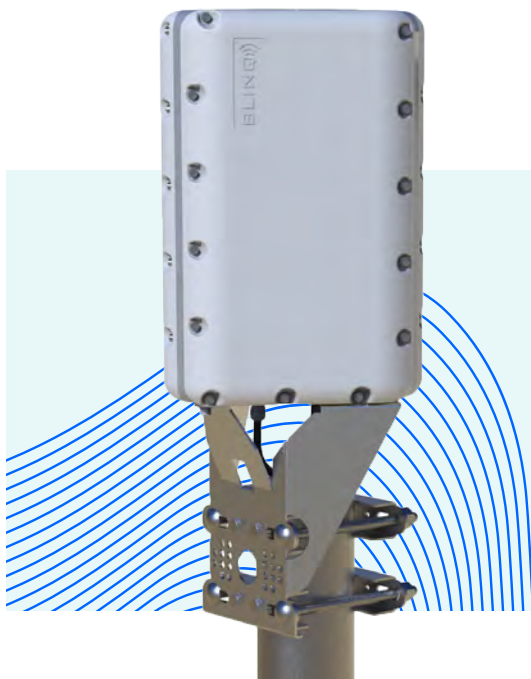
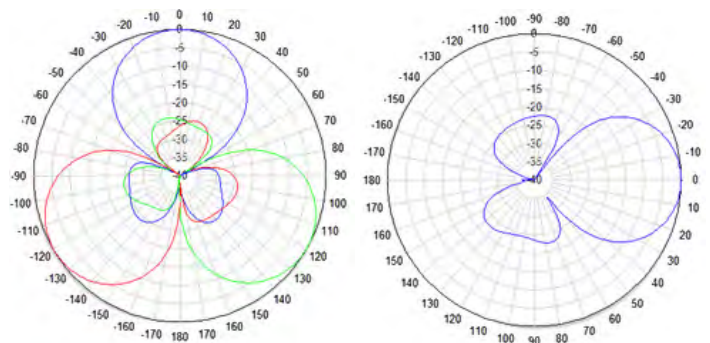
The X-300i Small Cell provides the most cost-efficient LTE Coverage in response to today's broadband connectivity needs. Following BLiNQ's unique technology approach, the X-300i combines high baseband capability with Active Antenna System Concepts to provide a true software defined radio solution.

This eNB can be mounted indoors on concrete or drop ceilings and outdoors on a mast or street lamp. It covers 270° of azimuth, powered by an integrated adaptive antenna system of 3 x 90° sectors.

With the X-300i, operators will be able to route capacity as per time of day usage to a more focused distribution by using carrier aggregation, thus providing coverage where it is needed, when it is needed.

Here are some key features:

- 3 Sectors with up to 3 Carriers
- Supports all LTE TDD Configurations
- Supports 10 MHz and 20 MHz
- Supports Downlink Carrier Aggregation (2CC + 1CC)
- 270° Azimuth Coverage
- Supports Mobility
- Available in DC Powered or POE SKUs



Supports Carrier Aggregation



CBRS Category B Certified



Dynamic Capacity Switching

X-300i

Specifications



MODEL	X3I-35-00-WW-OD	X3I-35-00-WW-POE
RADIO SPECIFICATION		
Frequency Band	3.55-3.70 GHz (LTE Band 48 - CBRS)	
EIRP	Up to 33 dBm	
Channel Bandwidth	10, 20 MHz	
MIMO	2TX x 2RX per Sector	
LTE Compliance	3GPP Release 10 (SW upgrade to Release 13)	
PERFORMANCE & ATTRIBUTES		
Number of UEs Supported	Up to 288 UEs per Base Unit	
Carrier Aggregation	Supports contiguous and non-contiguous 2CC configuration	
Throughput DL TDD Config 2-7	Up to 110 Mbps per Carrier Up to 330 Mbps per base unit - 3 x Carriers	
Throughput UL TDD Config 2-7	11 Mbps per Carrier 33 Mbps per Base Unit - 3 x Carriers	
Operating Mode	TDD-LTE (Supports all standard frame configurations)	
Power Consumption	70 W	
Power	48V DC	POE
Connectivity	1 x Copper 1000BaseT 1 x SFP (Optional)	1 x Copper 1000BaseT
Synchronization	Integral GPS receiver (GPS, GLONASS, BeiDou)	
CBRS	CBSD Category B - with 2 W aggregate EIRP certified	
Embedded EPC	Software Option	
OPERATIONS, ADMINISTRATION AND MAINTENANCE (OAM)		
Configuration	WebUI, CLI, TR-069 and EMS	
EMS Integration	RESTCONF	
OAM Protocols	RESTCONF, HTTPS, SSH, SNMPv2c and TR-069	

X-300i

Specifications



	X3I-35-00-WW-OD	X3I-35-00-WW-POE
ANTENNA SPECIFICATIONS		
Gain	12 dBi	
Azimuth Coverage	270° coverage (90° per sector)	
Azimuth Beamwidth (-3 dB)	45°	
Azimuth Beamwidth (-15 dB)	90°	
Elevation Beamwidth (-3 dB)	40°	
Elevation Beamwidth (-15 dB)	80°	
Electrical Downtilt	0°	
Azimuth Sidelobe	< -25 dB (Typ.)	
Front-to-Back Ratio @180°	> 30 dB (Typ.)	
Co-Polar Port-to-Port Isolation	15 dB (Typ.)	
Cross-Polarization Port-to-Port Isolation	> 20dB (Typ.)	
Max. Voltage Standing Wave Ratio (VSWR)	1.5:1	
Polarization	Dual Pol 45°	
MECHANICAL		
Dimensions (L x W x D)	13" x 9.05" x 8.1" (330 x 230 x 206 mm)	
Weight	14.8 lbs (6.7 kg)	
Survival Wind Speed	Up to 124 mph (200 km/hr)	
Mast Diameter Supported	2.5" to 3.5" (63.5 to 88.9 mm)	
Operational Temperature	-40 °F to 140 °F (-40 °C to 60 °C)	
Lightning Protection	DC Ground	



Contact Us

Tel: +1-800-301-4962
info@blinqnetworks.com
www.blinqnetworks.com

140 Renfrew Drive, Markham
ON, L3R 6B3, Canada
© 2024 BLiNQ Networks