

Case Study

Bringing Essential and
Urgent Connectivity to
communities using CBRS
and Fixed Wireless Access

In 2017, BLiNQ Networks and Frontier Communications began a conversation about the promise of LTE fixed wireless technology

With the upcoming availability of the CBRS band, there was a strong interest in BLiNQ's solutions and their potential to offer affordable connectivity where fiber could not deliver. Frontier engaged in preliminary trials of BLiNQ's hardware, setting up testing sites on Kelleys Island, Ohio. This was perhaps one of the more challenging RF environments to test a wireless network and was selected to rigorously push BLiNQ's capabilities to their limits.

Building a Fixed Wireless Network

After successful trials and promising results in 2019, Frontier selected BLiNQ as the exclusive vendor of wireless base stations and CPEs for its fixed wireless network. In 2020, Frontier expanded its network rapidly, focusing its deployment in the least connected parts of the United States.

Today they have over 500 towers with [FW-300i](#) base stations and [CPEs](#), which are offering broadband connection to many hard-to-reach pockets across the US. Their fixed wireless network, which is based solely on the CBRS band, has an estimated 8500 subscribers. With a growth rate of 20 daily subscribers, Frontier has the largest LTE CBRS fixed wireless network in the United States today.

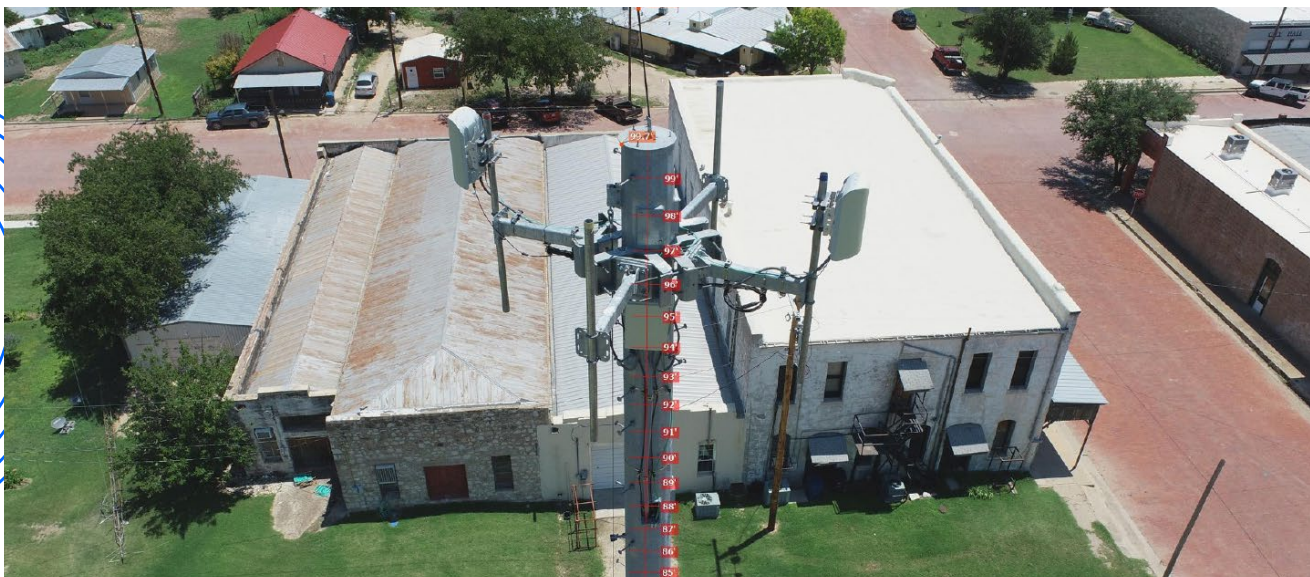


Image: Miles, Texas

Innovation at the Heart of the Project

As with any green field deployment of new technology, BLiNQ and Frontier had to work closely to overcome many obstacles during the process. Both companies devoted the necessary time and resources to achieve the level of robustness and network stability that would be required for large scale deployment. BLiNQ's expertise in dealing with complex NLOS environments proved to be instrumental in overcoming many of the network interference issues which proved to be an initial hurdle. Working side-by-side to meet requirements and deadlines was central to the innovative problem-solving approach by teams on both sides. "Working with BLiNQ was a no-brainer," commented Carlos Cardona, Director Wireless Architect at Frontier Communications.

“

They had the flexibility and expertise to meet our requirements and their solutions brought the necessary structure we needed to get our projects off the ground.

”

Connecting Communities

A Partnership With a Clear Vision

The collaboration between BLiNQ Networks and Frontier Communications demonstrated a solid partnership grounded in bringing the benefits of fixed wireless access and CBRS to poorly connected as well as unconnected communities in the United States. The aggressive rollout which began in October 2020 right through to May 2021 was an ambitious and urgent response to the pandemic. With the use of CAF funding deadlines looming, BLiNQ shipments were expedited to meet deployment targets and field technicians were rigorously trained over this period, to bring wireless CBRS connectivity to the deep, rural regions of the United States.

Using the BLiNQ portfolio of products, Frontier Communications was able to connect many communities for the first time ever, as well as increase internet speeds to up to 45 Mbps in areas where they may have experienced speeds of 1 Mbps or less. This essential connectivity enabled communities to work and learn from home and access health care services online.



Image: CPE installation



Image: CPE installation

Not only did Frontier use BLiNQ's solutions to provide fixed wireless connectivity to thousands of customers, but Frontier also used BLiNQ solutions to aid disaster recovery efforts from the Dixie fires which ravaged California in mid 2021. From their experience in deploying a robust LTE solution, Frontier was able to bring emergency connectivity to over 300 people to help rebuild and stabilize communities.

Frontier is on the FCC list of [Emergency Broadband Providers](#) and recently [announced their commitment](#) to provide broadband access to nearly 4,000 students in Texas, West Virginia and California. Frontier expects to continue utilizing BLiNQ solutions to provide this connectivity and is looking to expand their wireless networks with new innovations from BLiNQ in 2022.



About BLiNQ Networks

[BLiNQ Networks](#) is a pioneer manufacturer of CBRS-ready fixed wireless hardware, building the technology to provide essential internet connection all over the world. We provide industry-leading price and performance in LTE and 5G solutions, driven by a talented team who develop all our hardware and software products in-house from Ontario, Canada.

About Frontier Communications

[Frontier Communications](#) offers telecommunications services in 25 states in the US ranging from internet, phone, television services, and a broad range of complex communications services to all types of residential and business customers.



Contact Us

Tel: +1-800-301-4962
info@blinqnetworks.com
www.blinqnetworks.com

140 Renfrew Drive, Markham
ON, L3R 6B3, Canada
© 2024 BLiNQ Networks

