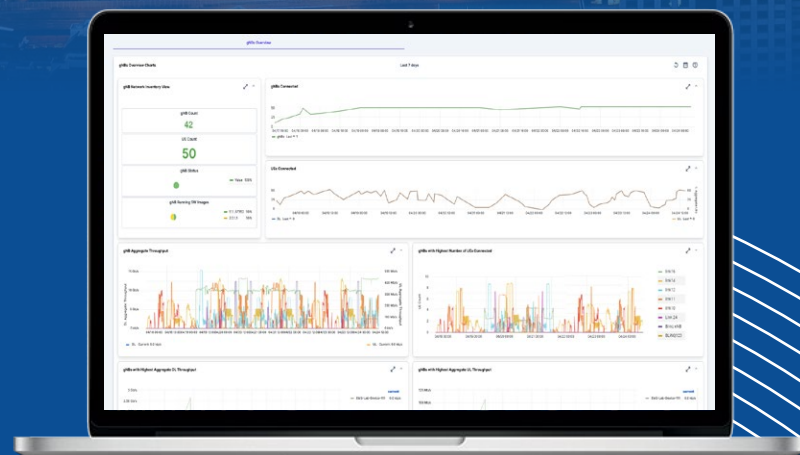




NetLiNQ

Management Suite

Smarter 5G,  
Unified Control



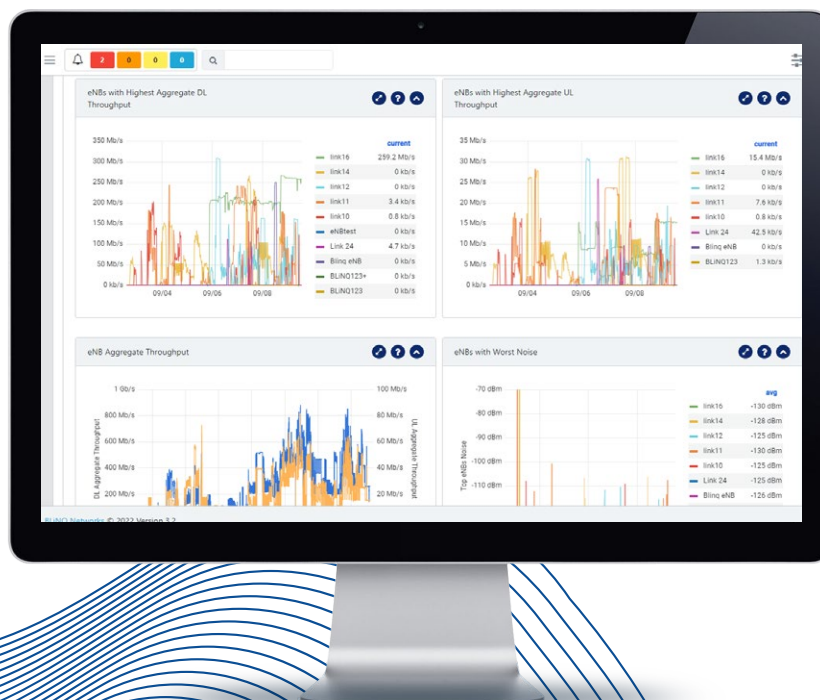
# Seamless Control, Smarter Networks.

BLiNQ's NetLiNQ Management Suite is a powerful, all-in-one solution for 5G networks. Combining the NetLiNQ Orchestrator and SON Controller, this AI-powered platform streamlines deployments, lowers operational costs, and maximizes performance with real-time network intelligence.

The NetLiNQ Orchestrator acts as a full-featured SMO (Service Management and Orchestrator System), offering centralized control, template-based configuration, and live network health monitoring. Deployed securely on servers for on-premises or in cloud-based AWS environments, the Orchestrator enables zero-touch provisioning when onboarding BLiNQ's 5G Small Cells.

Seamlessly integrated, the NetLiNQ SON Controller functions as a near real-time RIC (Radio Intelligent Controller), running AI-enabled xApps to automate SON (Self-Organizing Network) tasks such as dynamic channel allocation, transmit power optimization, and interference management across 5G and Wi-Fi bands. It also features a built-in CBRS SAS Proxy for fully automated spectrum access and compliance.

Operating as one unified solution, the NetLiNQ Management Suite offers a scalable SMO platform that reduces operational costs, enhances user experience, and elevates your network's intelligence and agility.





# Intelligent Orchestration for Next-Gen Networks.

## Key Features



Centralized Dashboard



Zero-Touch Provisioning  
(Automatic Onboarding)



rApp Infrastructure Support



Data Management



Backup & Restore



Performance Graphs



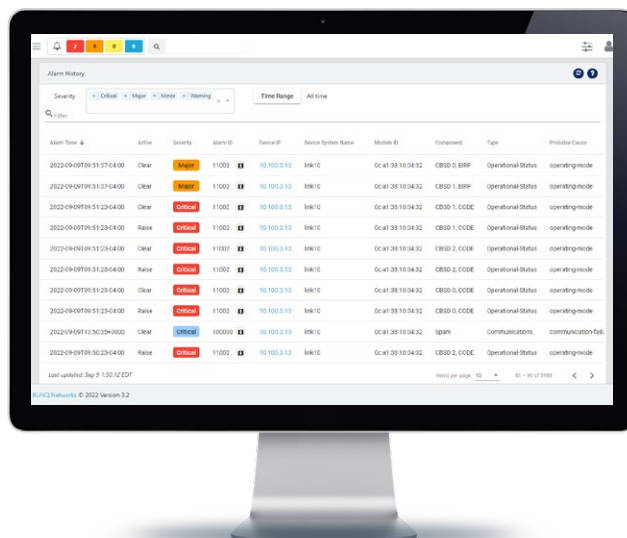
Uses Standard NETCONF, RESTCONF,  
HTTPS, WebSockets Interfaces



Alarms Management

- Centralized Dashboard to track your network health in real time.
- Zero-Touch Provisioning automatically configures Small Cells, enabling them to be operational within minutes.
- Configuration templates enabling simultaneous configurations or software upgrades.
- Fast, Flexible Data Management that facilitates network health evaluation.
- Backup & Restore data in the event of a crash.
- Real-Time Performance Graphs enable prompt response in managing devices based on the needs of the network.
- Integrated NetLiNQ SON Controller allows for single SMO.
- Alarms Management maintains alarms/events by level of severity and features customizable alarms based on KPIs.

# Adaptive Automation for Simpler Operations.



## Dynamic Frequency Selection xApp

Includes near real time spectrum and interference management



## Load Balancing and Congestion Pre-emption xApp

Ensures fair resource utilization and user distribution, proactively preventing network congestion



## Automated PCI Assignment xApp



## Transmit Power Management

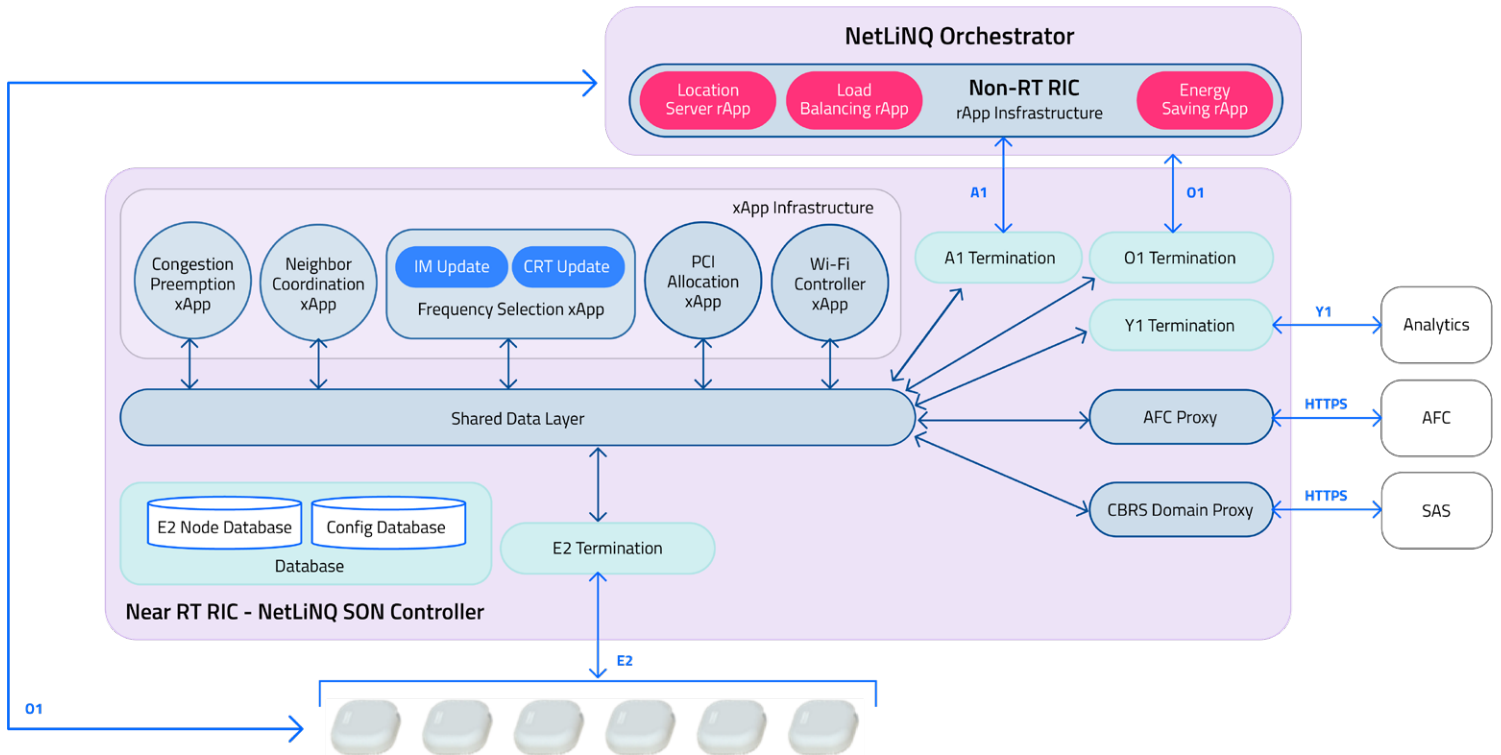


## Mobility Neighbor Coordination xApp

Mobility optimization and management



## CBRS SAS Proxy





## Contact Us

Tel: +1-800-301-4962  
[info@blinqnetworks.com](mailto:info@blinqnetworks.com)  
[www.blinqnetworks.com](http://www.blinqnetworks.com)

140 Renfrew Drive, Markham  
ON, L3R 6B3, Canada  
© 2026 BLiNQ Networks